

TO INSTALL OFFICE XP FROM THE SOFTWARE DISTRIBUTION ICON

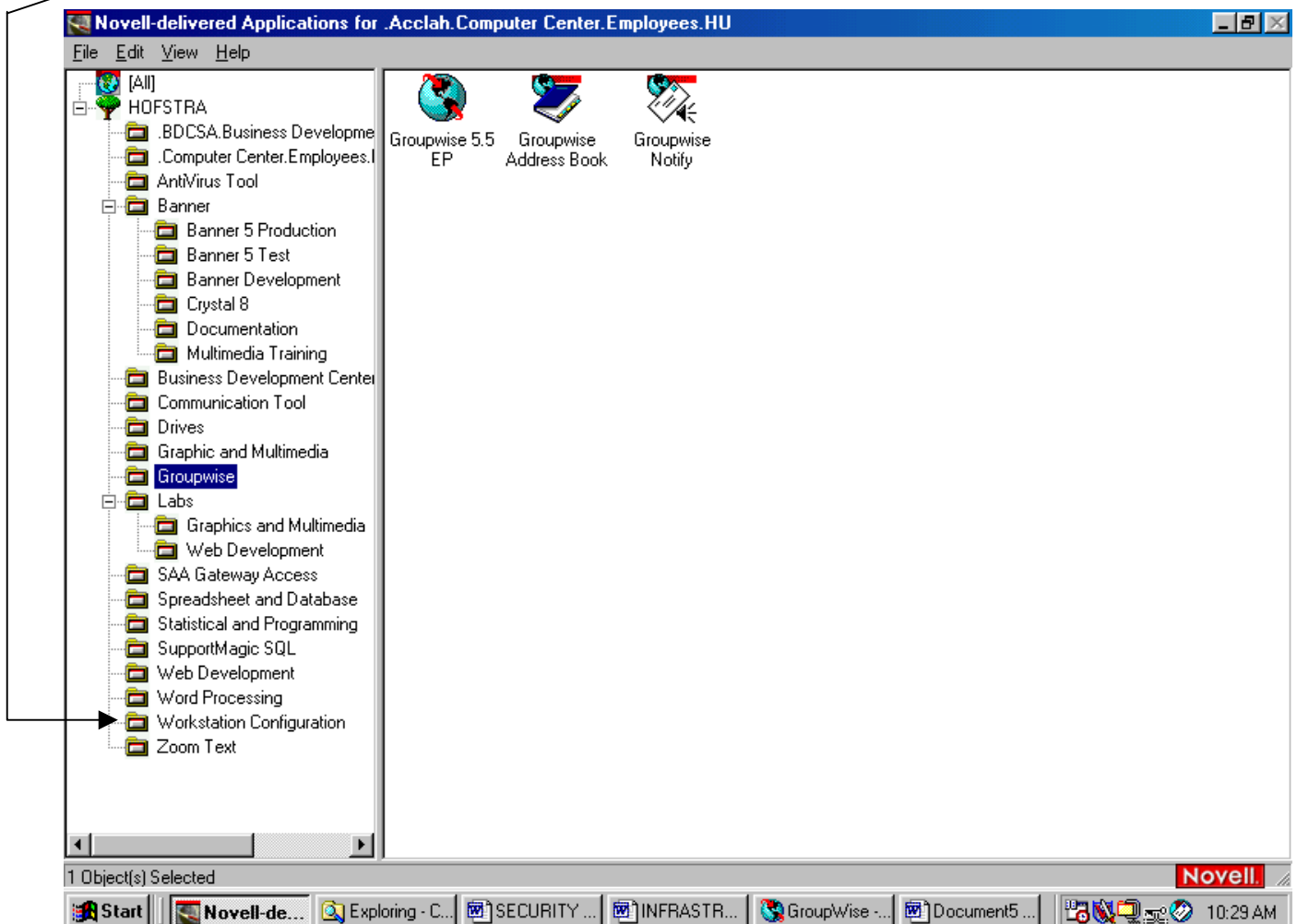
Office XP requires:

- Windows 98 [Office XP will not work with Windows 95]
- At least 64 MB of memory
- Up to 500 MB of storage space on the hard drive

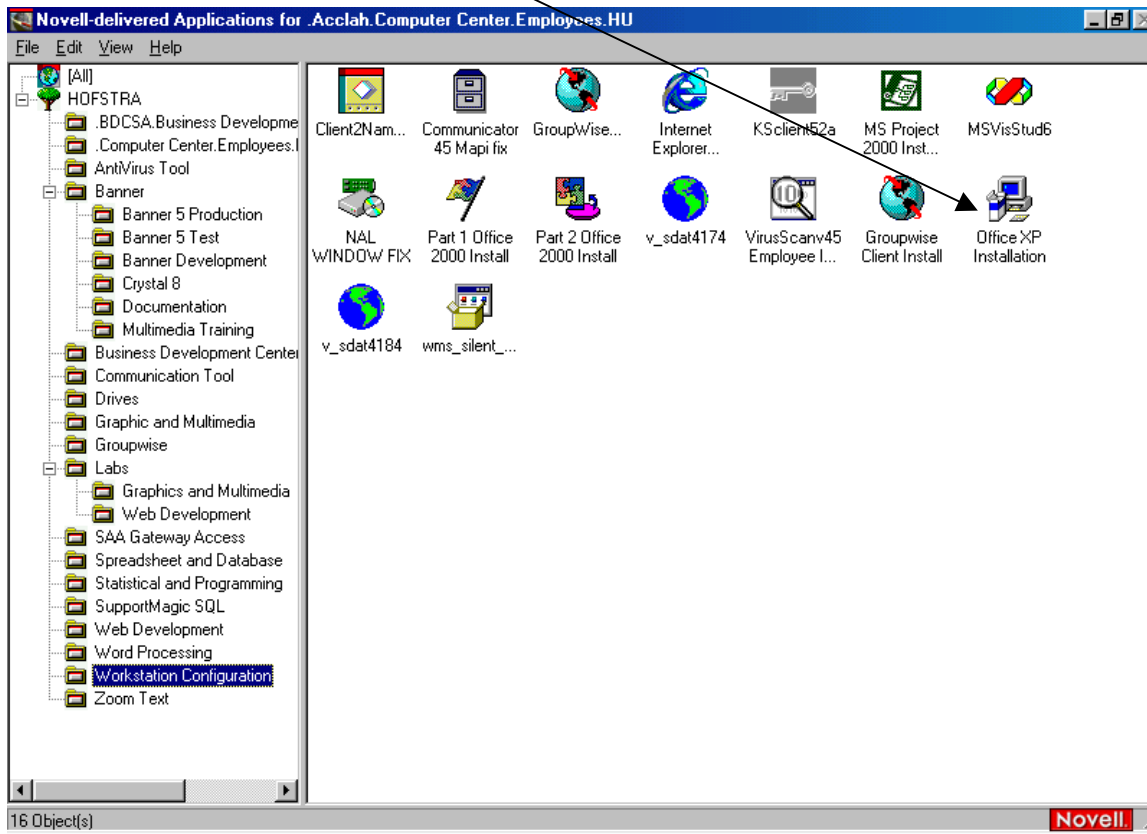
The software distribution will check your system for these resources. If the above resources are not available, the installation process will present a window that informs you of insufficient resources and the installation process will not run.

1) Login to your computer.

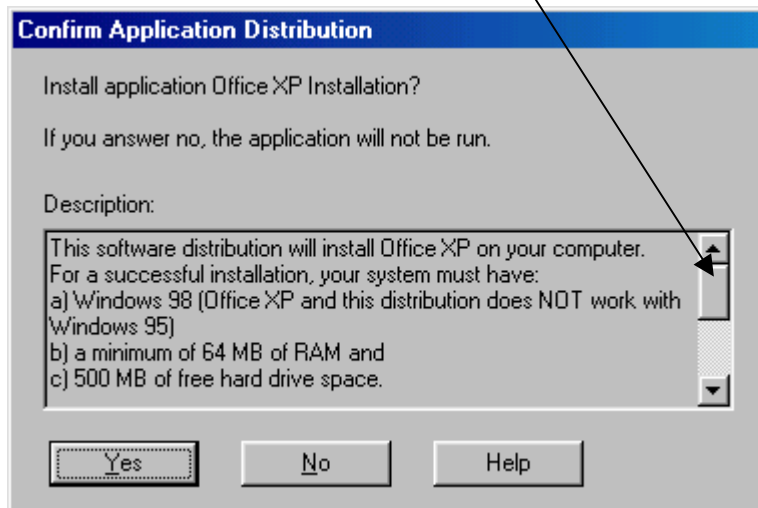
2) At the NAL (Novell-delivered applications) menu, click on **Workstation Configuration** folder.



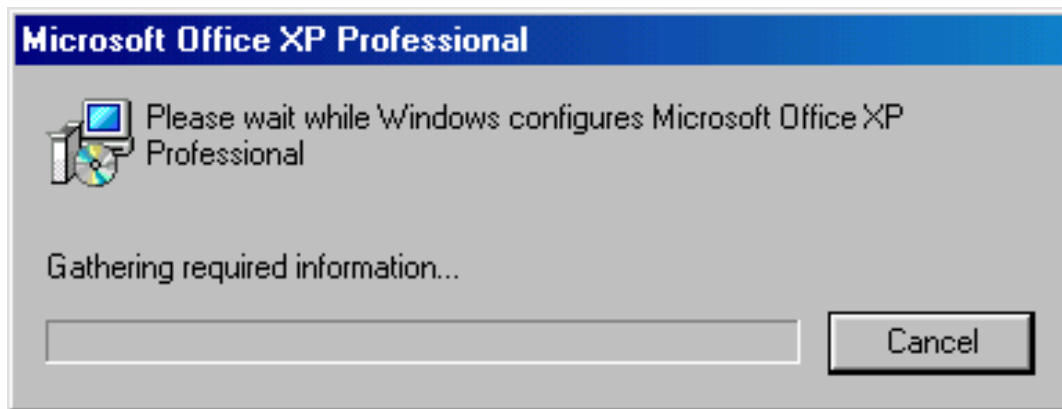
3) Double -click the Office XP Installation Icon



4) You will see this screen. Use the scroll bar to read the entire message. Click on **Yes**.



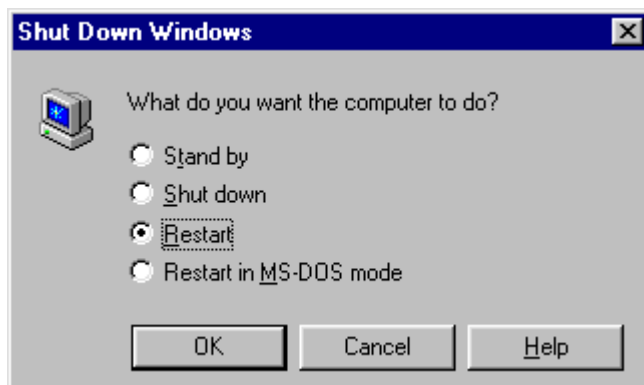
5) You will see this box for approximately 3-7 minutes.



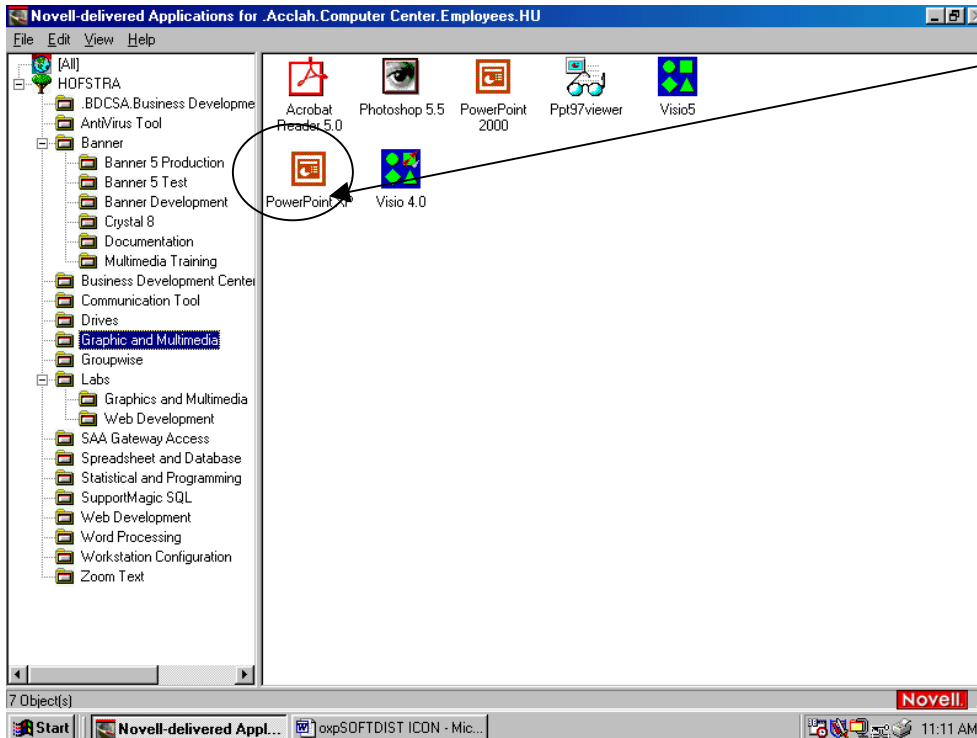
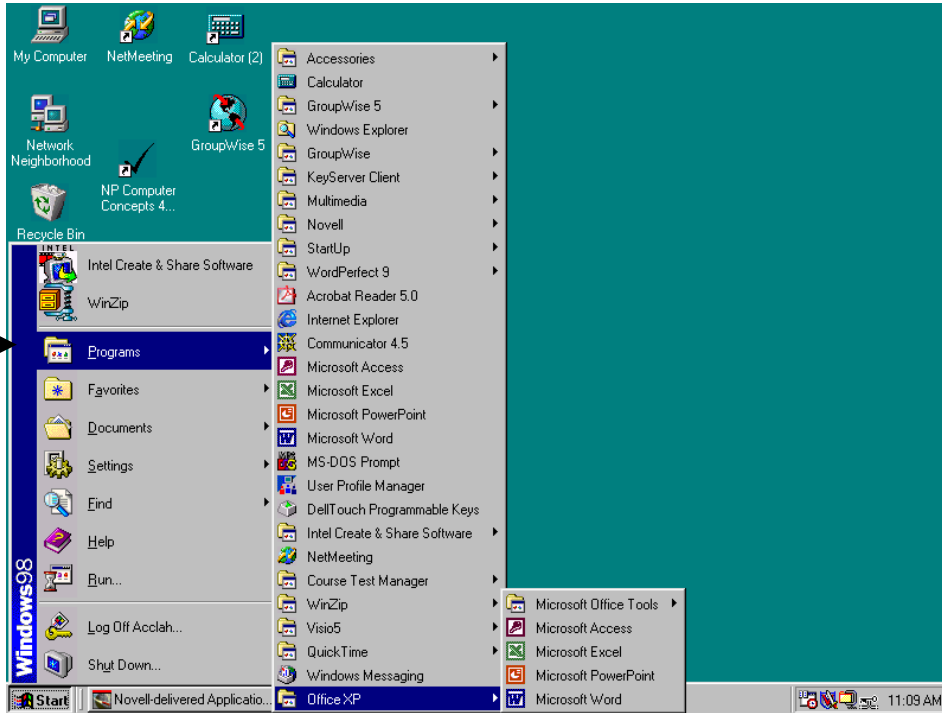
When the installation process has finished, the screen above will disappear.

6) Go to the START menu and select Shut **Down**

7) Select **Restart** to re-boot your computer to complete the installation process.



8) After re-booting your system, you will find the Office XP folder location on your START menu and in the appropriate NAL folders.



If you have any problems or questions, please contact:

The Help Desk at x3-7777.