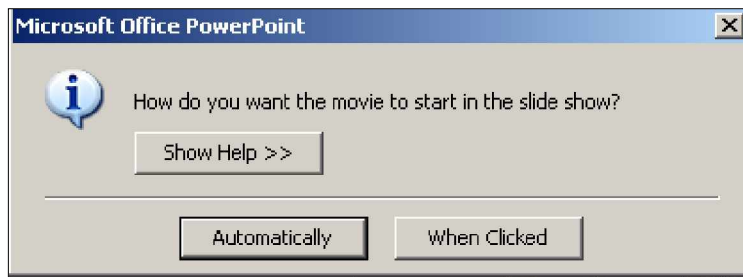
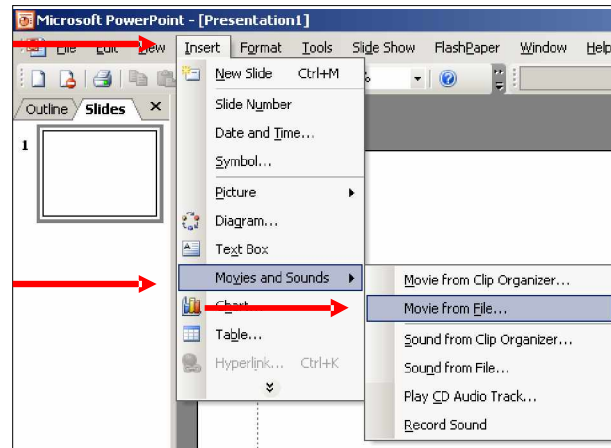


How to Add a Video to PowerPoint

- Click on **Insert > Movies and Sounds > Movie From File**
- Navigate to the picture you want to add
- Click on it
- Click **Insert**
- Choose if you want the movie to start **Automatically** or **When Clicked** in the slide show



Make the video larger or smaller by clicking on one of the corners of the picture, holding down then mouse and dragging. The larger you make it, the more pixilated it will be.

You can also move the video around the slide by clicking and dragging.