



QuickSheet: Core FTP LE Installation & Connection Settings

You can use Core FTP LE to connect to the People Server and your Home directory (F Drive) from an off-campus location. The FTPS protocol provides you a secure connection to Hofstra's network drives.

Installing Core FTP LE

1. Install Core FTP LE by downloading the application from the following website:
<http://www.coreftp.com/download.html>. Current version 2.1.
2. Run the **coreftplite.exe** setup icon.
3. Follow the on-screen instructions.
4. After the installation is complete, click on the **Finish** button and restart your machine.



Setting Up Core FTP LE

1. Run the application by either double clicking on the icon on your desktop or by clicking on **Start > All Programs > Core FTP > Core FTP Lite**.
2. Select **Yes** to make CoreFTP your default FTP client.
3. Select **Yes** to use notepad.exe to edit all ascii files.
4. Insert the following information in the **Site Manager** window.



Site Name: Hofstra

Host / IP / URL:
ftps.hofstra.edu

Username:
Your Network ID

Password:
Your Network Password

Site Manager

Hofstra

Site Name: Hofstra

Host / IP / URL: ftps.hofstra.edu [Advanced]

Username: accmmb [Anonymous]

Password: [Don't save password]

Port: 21 Timeout: 60 Retries: 2 [Retry On]

PASV Use Proxy

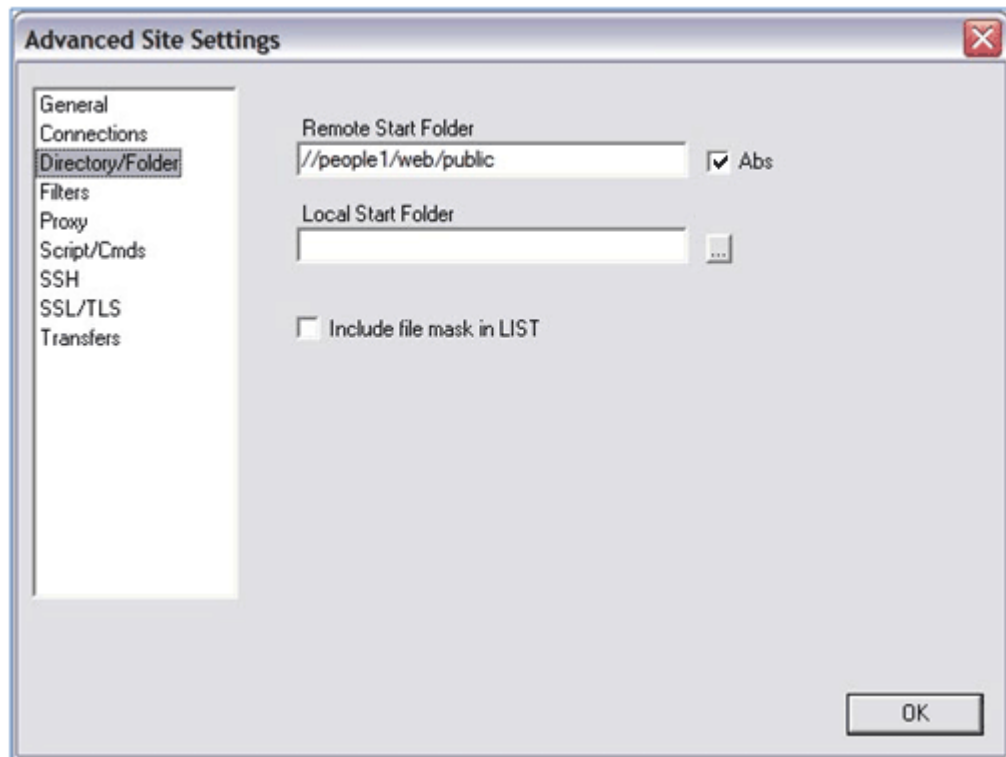
Connection: AUTH SSL

SSL Options:
 SSL Listings SSL Transfer Clear (CCC)
 OpenSSL Windows SSL

[New Site] [New Category] [Connect] [Connect Manager] [Close]

Core FTP LE Installation & Connection Settings

5. Click on the **Advanced** button, select **Directory/Folder**. By entering a folder location in Remote Start Folder, you will be automatically be connected to the specified path.
 - a. For Home directory (F Drive): leave the space blank.
 - b. For People directory (W Drive): insert **//people1/web/public** to the space provided.
 - c. Place a checkmark in the checkbox next to **Abs**.



6. You will then receive a **Certification Information** window. Click on **Always Accept**.

*NOTE: If you elected to have your Remote Start Folder to point to your People directory and upon connection you are not directed into your folder, change the path on the middle right side of the window from **/VOL1/USERS/USERNAME/** to **//people1/web/public** and hit **Enter**.*

Core FTP LE Installation & Connection Settings

Using Core FTP LE

1. The left side of the window represents your local workstation's hard drive. The right side of the window represents your remote directory (in this case the People directory).
2. To upload a document to your remote directory, select the folder/file from the left side and click on the **Blue Left Arrow (Upload icon)**.
3. To download a document from your remote directory to your workstation hard drive, select the file and click on the **Blue Right Arrow (Download icon)**.

