
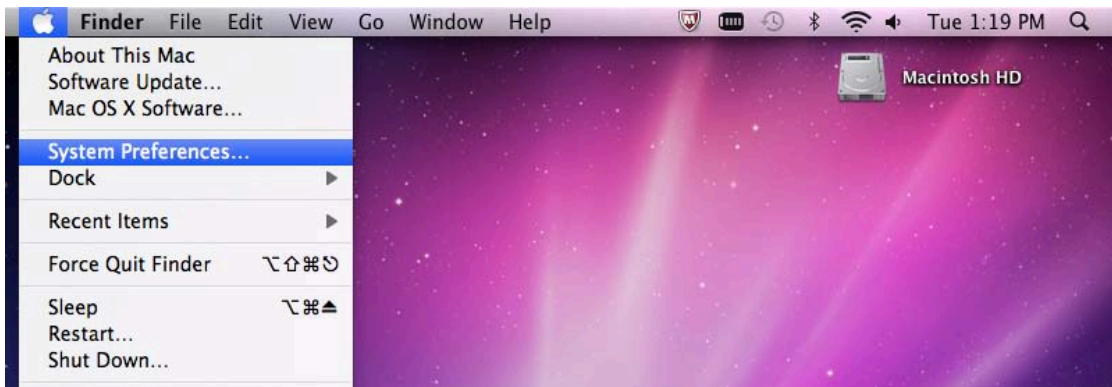


# Setup Instructions for Connecting to the HU PREFERRED wireless network at Hofstra University (for Mac OS X)

NOTE: Be sure that your AirPort card is already properly installed and/or enabled on the Mac.

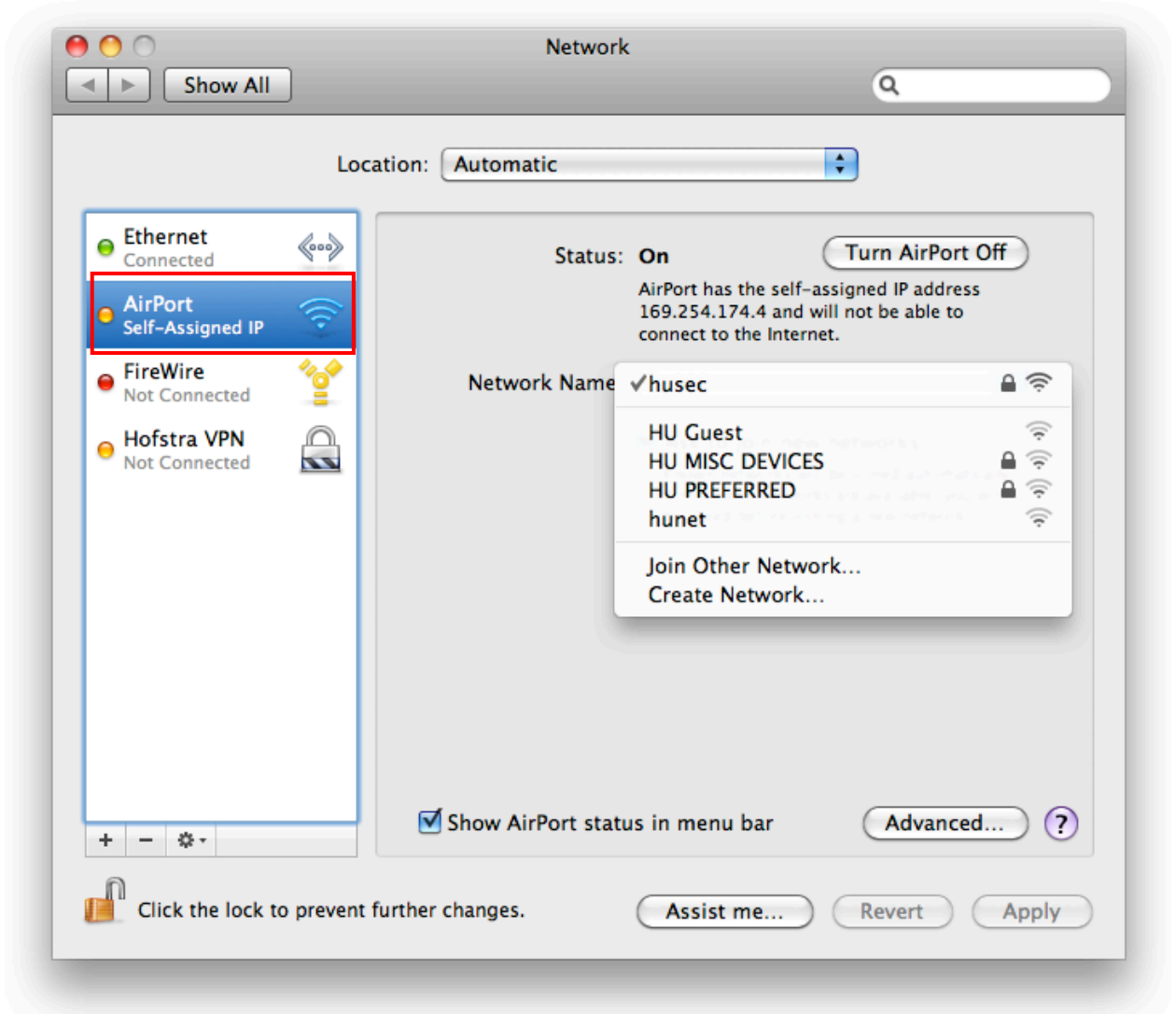
- Click the Apple menu  then select **System Preferences**.



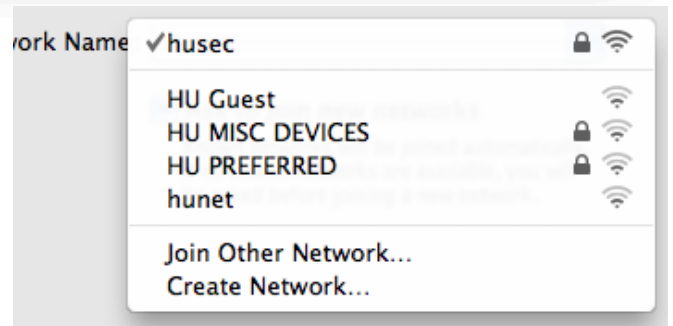
- When the System Preferences screen appears, click the **Network** icon.



- Under the Network screen, click on **AirPort**.



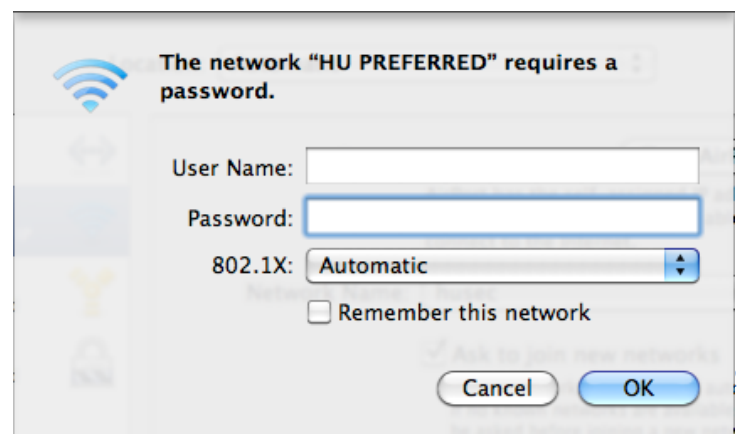
- Next, click on the double arrow next to Network Name, and select **HU PREFERRED** from the list.



- Shortly after you select the **HU PREFERRED** network name, you will be prompted to enter your Novell username and password. Please enter your Novell login information. \*Be sure to uncheck the 'Remember this network' option.

- Now, click OK.

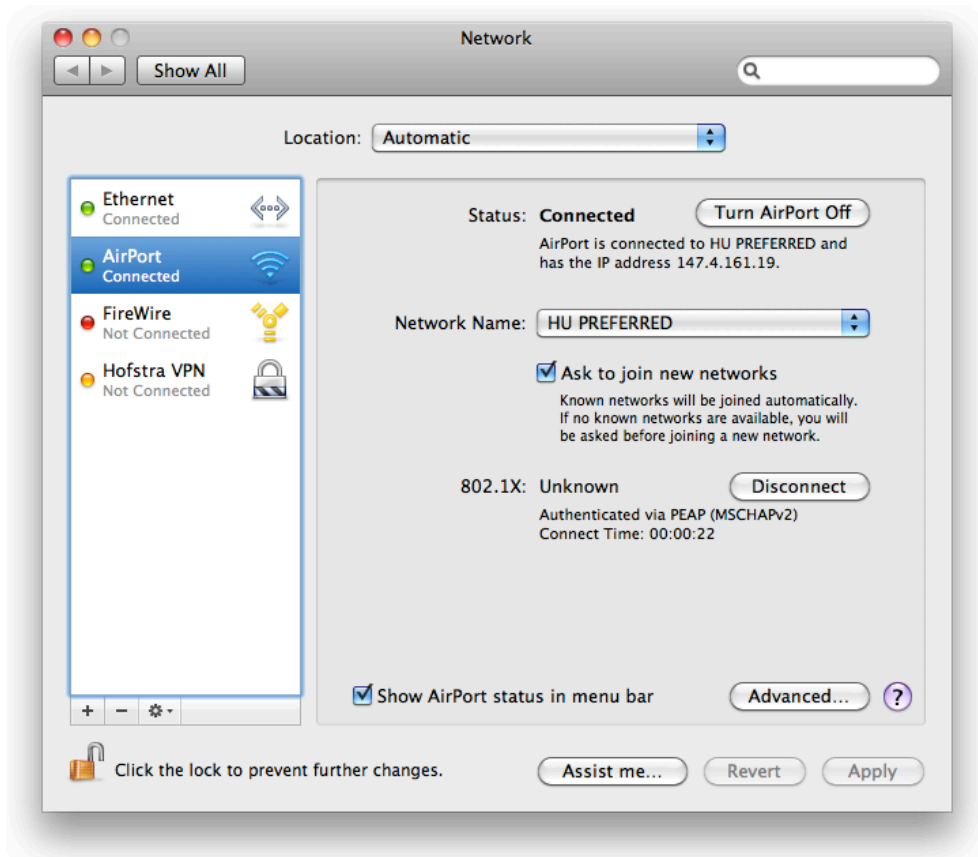
**CONNECTING TO HUSEC WIRELESS NETWORK**



- You will receive the following prompt, which is authenticating to the **HU PREFERRED** network. Please click **Continue**.



- Wait a few moments, and your Airport will indicate that it has connected successfully.



If you have any questions, or encounter any problems with connecting to the wireless network, please contact the **Help Desk** at **516-463-7777**.