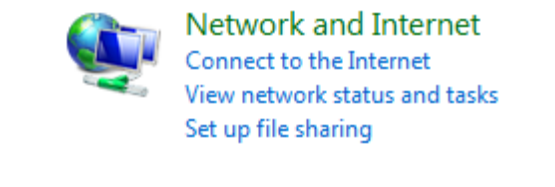
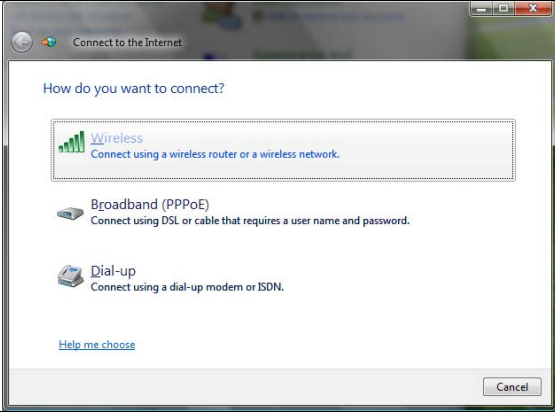
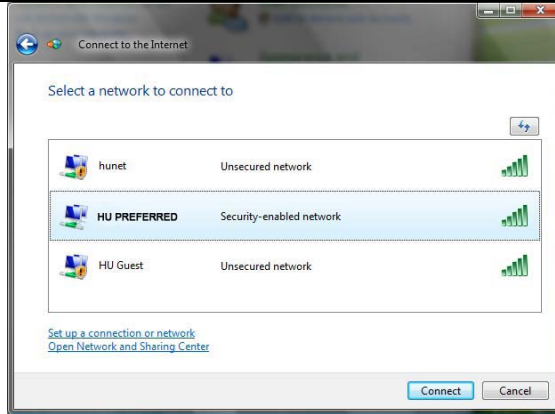
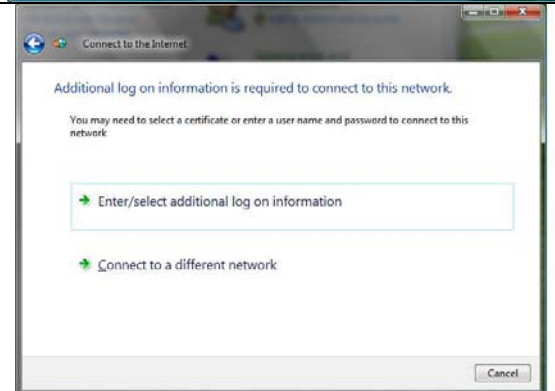
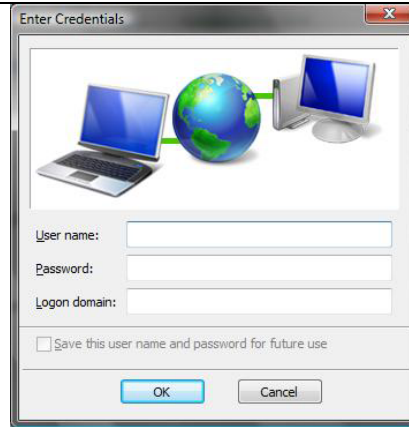


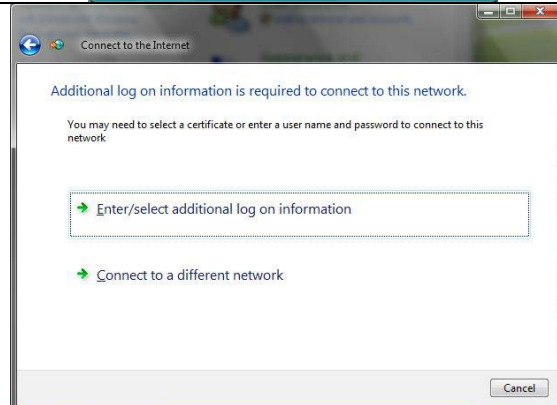
Setup Instructions for Connecting to the HU PREFERRED wireless network at Hofstra University for Windows Vista

<p>Step 1: Open the Control Panel and click on the <i>Connect to the Internet</i> link under the <i>Network and Internet</i> heading. Note that you may need to be in the <i>Control Panel Home</i> view to see this. You can switch your view by selecting it from the top left of the Control Panel window.</p>	
<p>Step 2: Click on the <i>Wireless</i> option.</p>	
<p>Step 3: Select <i>HU PREFERRED</i> from the list of available networks and then click the <i>Connect</i> button.</p>	
<p>Step 4: On the next window, click on the <i>Enter/select additional log on information</i> option.</p>	

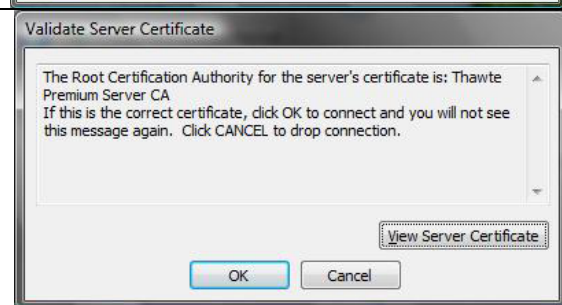
Step 5: Enter your Hofstra Network ID and password in the appropriate boxes. This is the same information you use to log in to the Hofstra Portal. Leave the *Logon domain* blank and click *OK*.



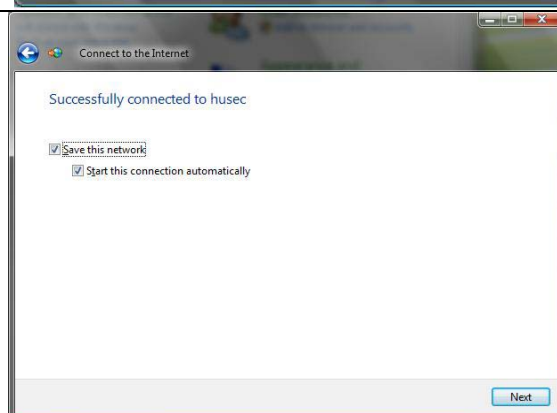
Step 6: Click on the *Enter/select additional log on information* button.



Step 7: Click *OK* to approve the certificate.



Step 8: Make sure that the *Save this network* and *Start this connection automatically* boxes are checked and click *next*.



Step 9: You should now be connected to HU PREFERRED. However, Windows may attempt to test your connection. You can click *Cancel* or *Skip* on this window.

