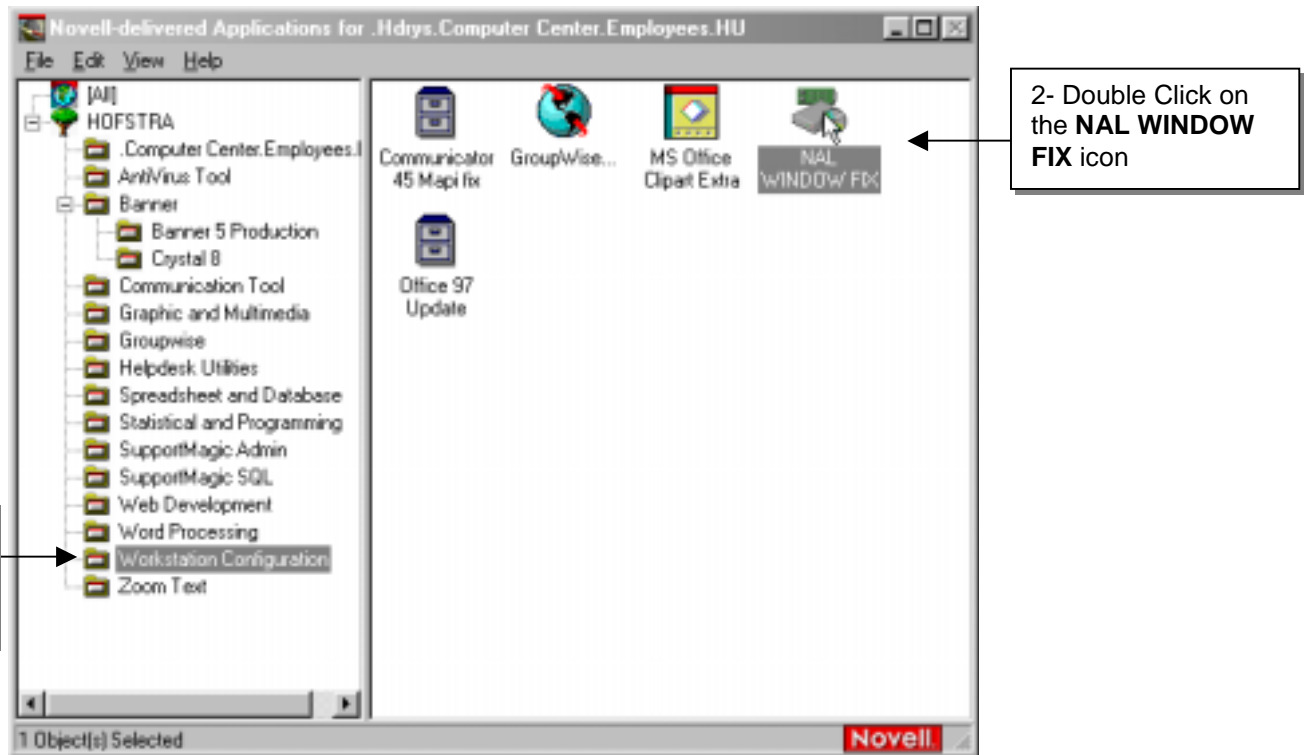


Novell Window Fix

Symptom: After logging into Novell, the Novell Application Launcher screen does not appear correctly.

When a machine is experiencing this issue please perform the following steps:

- 1- Go to the Workstation Configuration folder



- 2- Double click the NAL WINDOW FIX icon.
- 3- You must restart your computer in order for these settings to take effect.

The NAL window will again be sizable. A permanent fix for this issue is under investigation.