

How To Set A Screensaver Password for Windows 95/98



Figure 1: The Desktop area

1. On your Desktop, right-click your mouse button and the menu shown in **Figure 2** will appear. Then place your mouse pointer and left-click on **Properties**.

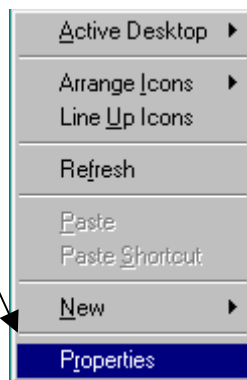


Figure 2: Properties Dialog Box

2. The next screen that will appear is titled Display Properties as shown in **Figure 3**.

① Click on the Screen Saver tab.

② Drop menu for screen savers, and then select the one that you prefer.

③ The Wait option allows you to set a number of minutes that will pass before your screen saver activates. The machine must be idle for the selected amount of time before it initiates, it will not activate while your computer is used. 15 minutes is recommended.

④ Check **Password protected** for this option to become available. This is where you can enter your password. **See Step 3.**

Figure 3: The Screen Saver Display Properties window

3. Below is an example of the Change Password box (**Figure 4**). Simply type your desired password and then re-enter the password to confirm.

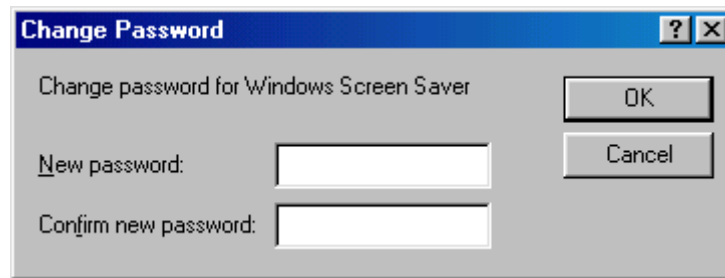


Figure 4: Change Password Dialog Box

4. This is how the Display Properties screen should look when you are finished.

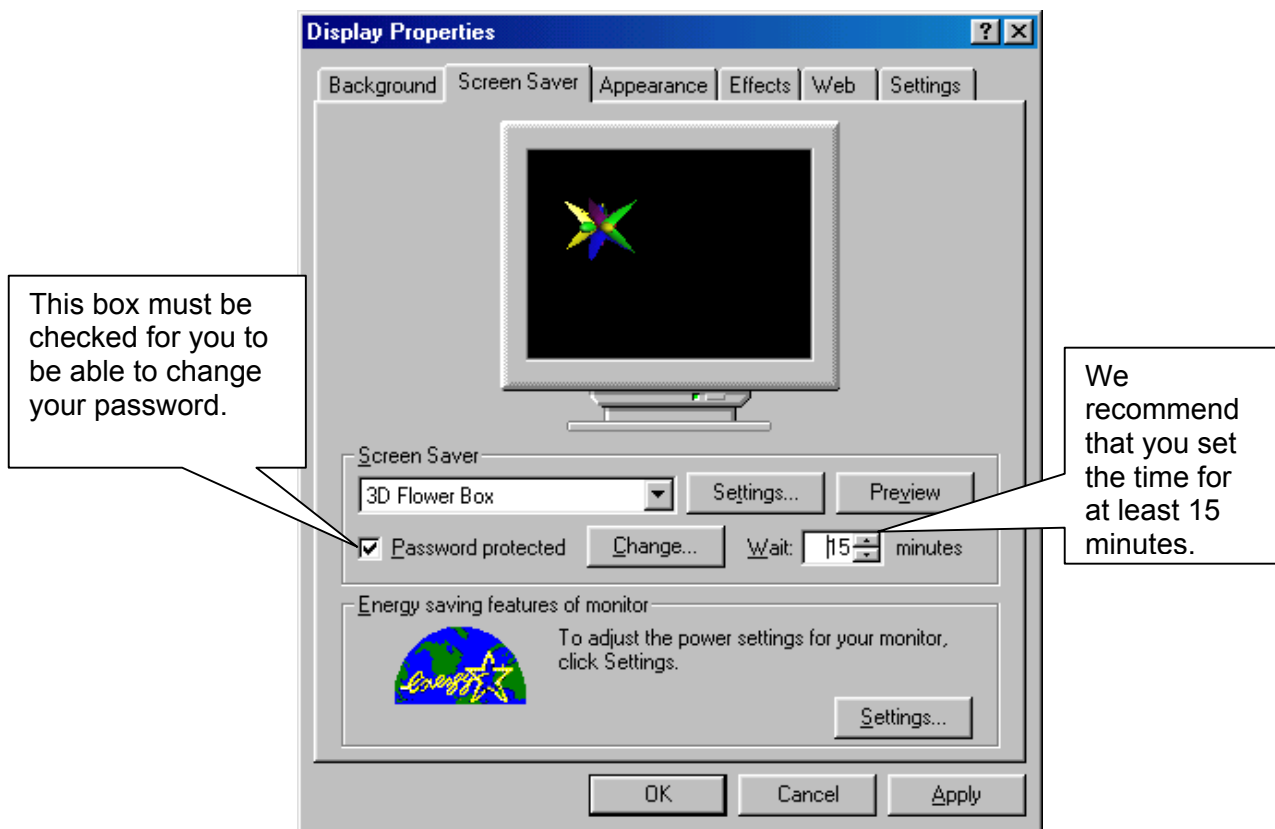


Figure 5: Screen Saver Display Properties Box with the suggested selections made.

5. Before going Step 6 review these steps and verify they are completed.
 1. Select your screen saver
 2. Check Password protected
 3. Set the wait to at least 15 minutes
 4. Click change to enter your password
6. Click OK to confirm these settings and exit the Display Properties screen.