



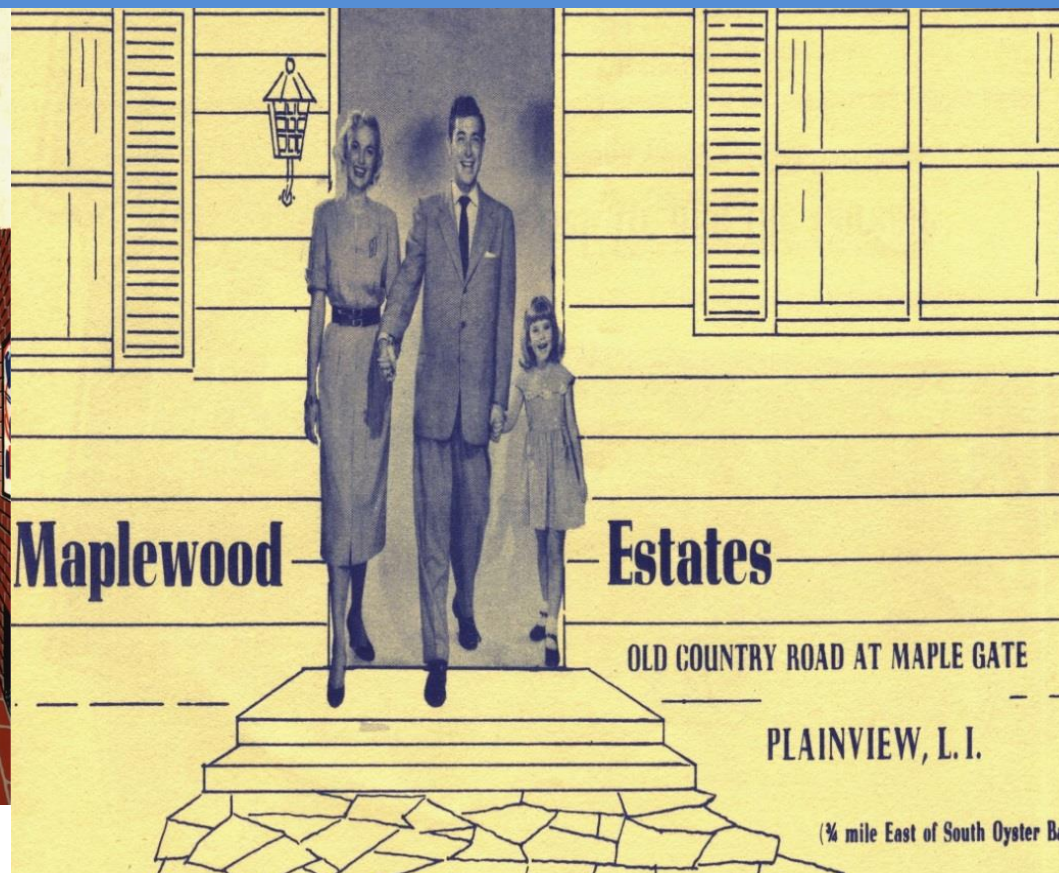
# The National Center for Suburban Studies at Hofstra University®

*and the*  
**Hofstra Cultural Center**  
*presents*

## SUBURBAN SUSTAINABILITY: A SYMPOSIUM

Thursday, November 10, 2016

*Symposium Program*



**National Center for Suburban Studies at Hofstra University®**  
*and the*  
**Hofstra Cultural Center**  
*present*

## **SUBURBAN SUSTAINABILITY: A SYMPOSIUM**

Thursday, November 10, 2016.

9 a.m. – 5 p.m.

Guthart Cultural Center Theater, Axinn Library, First Floor, South Campus

---

### SYMPOSIUM CO-DIRECTORS

**Sandra Garren, PhD**

*Director of Sustainability Studies, Department of  
Geology, Environment, and Sustainability  
Director of Sustainability Research, National Center for  
Suburban Studies at Hofstra University®*

**Robert Brinkmann, PhD**

*Vice Provost for Scholarship and Engagement and  
Associate Dean of Graduate Studies.  
Professor of Geology, Environment, and Sustainability  
Hofstra University*

---

### SYMPOSIUM COORDINATORS

**Athelene A. Collins**

*Executive Director  
Hofstra Cultural Center*

**Carol D. Mallison**

*Manager of Conferences and Events  
Hofstra Cultural Center*

---

### National Center for Suburban Studies at Hofstra University® Research Assistants

Lauren D' Orsa

Jared Garfinkel

Elizabeth Peterson

Keshanti Nandlall

Amit Nath

Joseph Murphy

Jakob Sacket

Sarah Lippman

Anastasia Yankopoulos



Marilyn Bridges  
*Lane Manned, NYC* from  
the portfolio *Heightened  
Perspectives*, 1985  
Gelatin silver print, 14  
3/4 x 18 3/4 in.  
Hofstra University  
Museum Collections,  
Gift of Susan and Steven  
Ball, HU95.14.16



# Suburban Sustainability: A Symposium Program

## Conference Overview

One of the key questions facing society today is how it can survive problems such as global climate change, pollution, water scarcity, and environmental justice challenges. The suburbs are not often thought of as places where sustainable practices thrive. Yet, there are examples all over the United States where suburban communities are making great strides to improve not only the sustainability of their communities, but also of their regions and the broader U.S.

This one-day symposium includes three panel discussions and a buffet lunch with a keynote discussion focused on the political successes and challenges for making our suburbs sustainable. The day ends with a reception at the Hofstra University Museum which is showcasing an exhibit on how Manhattan connects to suburban Long Island titled *Over the River: Transforming Long Island*. Speakers include a range of experts who are working on real-world solutions to sustainability challenges within the realms of environment, economic development, and social equity. During this election year, the symposium will take on greater significance as the suburbs play an important role in the future of our country.

## Suburban Sustainability: A Symposium Program

**8:30 a.m.                      REGISTRATION AND COFFEE**

**9 - 9:30 a.m.                OPENING REMARKS AND KEYNOTE ADDRESS**

### Call to Order

- Dr. Sandra Garren and Dr. Robert Brinkmann, Hofstra University

### Welcome

- Provost Gail Simmons, Hofstra University

### Opening Keynote Address

- Introduction by Lawrence Levy, Executive Dean, National Center for Suburban Studies at Hofstra University®
- Keynote Address, John Cameron, Chair, Long Island Regional Planning Council

# Suburban Sustainability: A Symposium Program

**9:35-11:00 a.m.**

## ENVIRONMENTAL CHALLENGES IN THE SUBURBS

The morning session will provide an overview of environmental challenges facing suburbs with topical coverage of food, energy, water, and coastal resiliency. Expert panelists will provide not only an overview of these challenges, but will highlight programs and policies designed to move towards more sustainable practices in the suburbs.

**Moderator:** Annetta Vitale, Professor, Hofstra University

**Panelists:**

- James Gennaro, Deputy Commissioner for NYS Sustainability and Storm Resiliency, NYS Department of Environmental Conservation, *Long Island Nitrogen Action Plan*
- Bernadette Martin, Market Manager at Taste NY Marketplace, Cornell Cooperative Extension Nassau County, *Can Locally-Sourced Food Feed the Suburbs?*
- Neal Lewis, Executive Director, Molloy Sustainability Institute, *The Challenges of Renewable Energy in the Suburbs*
- Dr. E. Christa Farmer, Geology Professor, Hofstra University, *Rebuild or Retreat? Coastal Resiliency with Climate Change*

**11:10 - 12:30 p.m.**

## CHANGING SUBURBAN LANDSCAPES

This session will begin with a visual illustration of how Long Island developed into the first American suburb. The panelists will discuss specific principles that include land preservation, smart growth, and green building to promote sustainable development in the suburbs.

**Moderator:** Dr. Robert Brinkmann, Vice Provost of Scholarship and Engagement  
Hofstra University

**Panelists:**

- Geri Solomon, Director of Long Island Studies Institute, Hofstra University  
*From Sea Shells to Suburbia: Long Island's Changing Landscape*
- Lisa Ott, President and CEO of North Shore Land Alliance, *Preserving Lands in the Suburbs*
- Eric Alexander, Director, Vision Long Island, *Smart Growth and Downtown Revitalization*
- Sammy Chu, Chairman of the US Green Building Council, Long Island Chapter,  
*The Challenges of Green Building in the Suburbs*

# Suburban Sustainability: A Symposium Program

## 12:35 - 2:10 p.m. LUNCHEON AND KEYNOTE CONVERSATION

### *Political Challenges Facing Suburban Communities*

This keynote event brings together current and former local government leaders to discuss successes and failures within communities. The panel includes political leaders representing local governments from three states (i.e., California, Massachusetts, and New York).

**Moderator:** *Diane Masciale*, General Manager WLIW21, Long Island's Public Media Station

**Panelists:**

- *Henrietta Davis*, Former Mayor of Cambridge, Massachusetts
- *Dr. Ronald Loveridge*, Former Mayor of Riverside, California and the Director of the Center for Sustainable Suburban Development at the University of Riverside, California
- *Jack Schnirman*, City Manager, City of Long Beach, New York

*\*Space is limited, so you must RSVP for the luncheon. Lunch is located on the 10<sup>th</sup> Floor of the Axinn Library and will be served buffet style and the conversation will begin as soon as everyone is seated. To reach the lunch, exit Guthart Cultural Center Theater and enter the library directly across the hall, take the elevator to the 10<sup>th</sup> Floor.*

## 2:20 – 3:45 p.m. HOUSING AND TRANSPORTATION IN THE SUBURBS

The afternoon panel will delve into social sustainability topics that include housing affordability, the process and progress of environmental justice, and transportation and air pollution issues in suburbs. The panelists will highlight specific programs and case studies from a variety of suburbs.

**Moderator:** Dr. Sandra Garren, Director of Sustainability Studies, Hofstra University

**Panelists:**

- William Achnitz, Sustainability Coordinator, Community Development Corporation of Long Island, *Affordable Housing On an Unaffordable Island: How Nonprofits Are Helping*
- Dr. Martine Hackett, Public Health Professor, Hofstra University, *Suburban Community Engagement for Environmental Justice: Process and Progress*
- Dr. Chris Niedt, Sociology Professor, Hofstra University, *Sustaining Affordable Housing: The Uniondale Community Land Trust*
- Dr. Viney Aneja, Atmospheric Science Professor, North Carolina State University *Ozone in Urban North Carolina, A Sustainability Case Study*

# Suburban Sustainability: A Symposium Program

4 - 5 p.m.

MUSEUM EXHIBIT AND RECEPTION

## *Over the River: Transforming Long Island*

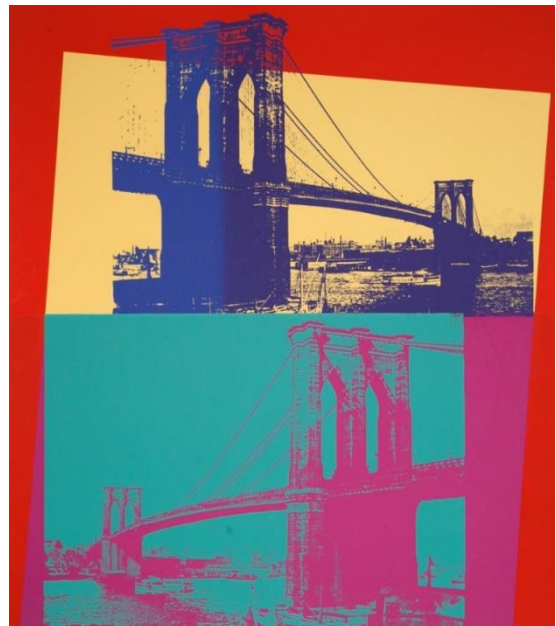
The day ends at the Hofstra University Museum, Emily Lowe Gallery, for the Over the River: Transforming Long Island museum exhibition.

### About the Exhibit

This original exhibition features works in the Hofstra University Museum Collections by artists such as Marilyn Bridges, Louis Lozowick, and Andy Warhol, as well as works on loan from private collectors, other museums and artists. The focus of the exhibition is the transformation of Long Island over the decades, brought about by the construction of bridges, tunnels and roadways that provide direct routes to New York City. Issues addressed include the planning and development of suburbia, the long-term impacts on the environment, and contemporary challenges. In addition to works of art, the exhibition includes planning documents and archival photographs on loan from the Special Collections Department of the Hofstra University Libraries.



Louis Lozowick  
*Transportation (March)*, 1943-44  
Lithograph, 9 13/16 x 13 in.  
Hofstra University Museum Collections, Gift of  
Daniel Mason, HU77.102  
© Courtesy of the Estate of Louis Lozowick and  
Mary Ryan Gallery, New York



Andy Warhol  
*Brooklyn Bridge*, 1983  
Screenprint on Lenox Museum Board, Extra,  
out of edition. Designated for research and  
education purposes only, 39 3/8 x 39 3/8 in.  
Hofstra University Museum Collections, Gift  
of The Andy Warhol Foundation for the  
Visual Arts Inc., HU2014.10  
© The Andy Warhol Foundation for the  
Visual Arts, Inc.

## BIOGRAPHICAL SKETCHES



### William Achnitz

William Achnitz III is the Sustainability Coordinator at Community Development Corporation of Long Island (CDCLI). At CDCLI, William provides outreach and marketing for the Long Island Green Homes Initiative, a nonprofit partnership that is helping Long Island residents save money on their energy bills by enrolling them in free home energy audits. William also serves as a Clean Energy Communities Coordinator for the Clean Energy Communities program offered by the New York State Energy Research & Development Authority (NYSERDA), a new program that is assisting local governments in implementing clean energy actions. William holds multiple degrees from LIU Post including a

Bachelor's in Accounting, a Bachelor's in Finance, and a Master's in Environmental Sustainability. Previously, William served as Campus Sustainability Coordinator at LIU Post where under his leadership the school became the first on Long Island to receive a STARS rating, an internationally-recognized rating system that provides a framework for colleges and universities to measure their sustainability performance.



### Eric Alexander

Eric Alexander is the Director of Vision Long Island, the region's Smart Growth planning organization. He has over twenty five years of experience in housing, transportation, community development and coordinating successful community projects. Eric has been a proponent of downtown planning, infrastructure investment and mixed use development through advocacy efforts on Federal, State, County levels while working with municipalities to develop and implement smart growth policies, regulations, and projects. All told his efforts at Vision Long Island have resulted in acting as a catalyst for over 100 Smart Growth projects supporting 12,000 units of Transit Oriented Development across LI. Since joining Vision Long Island, Eric has been working to support proactive land use planning

decisions through the use of community visionings, and other progressive planning techniques. Eric has led visioning processes and technical support in the following twenty communities. Each of these projects resulted in a community plan and are all in varying stages of planning and construction. In addition Eric has working on regional planning projects surrounding NYSERDA's Cleaner Greener Grants program, NYS CRP planning and grants program, Nassau HUB, Long Island 2035, Brookhaven 2030 and the Federal Partnership for Sustainable Communities.



### Viney P. Aneja, PhD

Viney Aneja is a Professor and Co-Director Graduate Programs in the Department of Marine, Earth, and Atmospheric Sciences, North Carolina State University. He obtained his B. Tech. degree in Chemical Engineering from the Indian Institute of Technology, Kanpur, India, in 1971. Before joining the faculty of the Department of Marine, Earth, and Atmospheric Sciences at N. C. State in 1987, he conducted and supervised research at Corporate Research and Development, General Electric Company, New York. He was recently appointed to the US Environmental Protection Agency's Board of Scientific Counselors (BOSC) Executive Committee, and Chair the BOSC Subcommittee for Air,

Climate, and Energy (ACE) research program, 2014-2017. He is a Member Representative of the University Corporation for Atmospheric Research, Boulder, CO. At North Carolina State University Dr. Aneja has developed one of the nation's leading agricultural air-quality and climate research programs (<http://www.meas.ncsu.edu/airquality>). He has published over 170 scientific papers, 127 book chapters and conference proceedings scientific papers, 47 technical reports, 5 US patents, and two books on his research. Dr. Aneja has directed 8 post-doctoral fellows, 14 doctoral dissertations, and 41 masters' theses.



## BIOGRAPHICAL SKETCHES (continued)



### Robert (Bob) Brinkmann, PhD

Robert Brinkmann is the Vice Provost for Scholarship and Engagement and Associate Dean for Graduate Studies at Hofstra University. He is also a Professor in the Department of Geology, Environment, and Sustainability. Brinkmann is the Chair of the Board of the National Cave and Karst Research Institute and has served as the Co-Editor of the *Southeastern Geographer*. He is an Associate Editor for the *Journal of Cave and Karst Studies* and the Editor of *Suburban Sustainability*. He has served as an elected officer with a number of national, regional, and local organizations. Brinkmann has appeared on a number of national news outlets as an expert on geologic and environmental issues including *CBS News* and *CNN*. His blog, *On the Brink*, which focuses on environmental and sustainability issues, gets thousands of hits a day. He is the co-author of a book called *Urban Sediment*

*Removal: The Science, Policy, and Management of Street Sweeping*, the only major book ever published on street sweeping and storm water. His book, *Sinkholes of Florida: Science and Policy*, was published by the University of Florida Press in 2013. His new book, *Introduction to Sustainability* was published by John Wiley and Sons this year. He has two more books in progress that focus on sustainability issues in urban and suburban regions of the world.



### John Cameron

John Cameron is the Founder and Managing Partner of Cameron Engineering & Associates, LLP. The Firm is completing its 32nd year in business, specializing in various aspects of consulting engineering and planning, serving the public and private sectors. An engineering graduate of the United States Merchant Marine Academy at Kings Point, Mr. Cameron also holds a Master's Degree in Environmental Science from Long Island University and has an honorary Doctor of Laws degree from Molloy College. Mr. Cameron serves on numerous boards including those of civic, professional and educational organizations, including the Long Island Regional Planning Council, where he serves as Chairman; the Holocaust Memorial and Tolerance Center of Nassau County, the Hofstra University and Stony Brook University Engineering Schools, the U.S. Merchant Marine Academy Alumni Association and others.

Mr. Cameron has diverse personal interests including surfing, running, sports, music, travel, reading, writing, art and politics.



### Sammy Chu

Sammy Chu is the chief innovation officer for Edgewise Energy, a Long Island based clean-tech start up focused on deploying next generation, behind the meter distributed energy resources. He was the founding director of the Town of Babylon's Long Island Green Homes Program – the first operationalized property assessed clean energy program (PACE) in the country. Chu previously served in the administration of County Executive Steve Bellone as Deputy County Executive for Operations and as commissioner of the Suffolk County Department of Labor, Licensing & Consumer Affairs. He was the lead county official in the aftermath of Superstorm Sandy, tasked with coordinating response and recovery. A staunch advocate of inclusive, sustainable economic development, Chu was instrumental in creating workforce opportunities for traditionally underserved individuals during the

planning of the transformative Wyandanch Rising development, one of the seminal LEED ND projects. He currently serves in various volunteer leadership positions including chairman of the Long Island chapter of the US Green Building Council, vice chair of the Suffolk County Planning Commission, and as a board member of the Health and Welfare Council of Long Island, the Child Care Council of Suffolk, and the Suffolk County Workforce Development Board.



## BIOGRAPHICAL SKETCHES (continued)



### Henrietta Davis

Henrietta Davis served as the Mayor of the City of Cambridge, Massachusetts for two years, from 2012 to January 2014. Over two decades serving the City of Cambridge, Mayor Davis focused on creating a healthy and livable city, concentrating on energy and the environment, pedestrian and bicycling safety, neighborhood preservation, housing, aging in Cambridge, and children's health and education.

In Cambridge, a hub of the global knowledge-based economy, Mayor Davis convened all sectors of the community for urban planning, sustainable development, and science and technology-based workforce development (STEAM). As mayor she took the lead to found the Cambridge Compact for a Sustainable Future, a collaboration between MIT, Harvard and many of the city's leading businesses in the knowledge-based economy. Beyond Cambridge, Mayor Davis has been involved with national and state activities. She is a past Chair of the National League of City's Energy, Environment and Natural Resources Committee. At NLC she also chaired the University Community Relations Committee. She was a member of the Massachusetts Municipal Association's Energy and Environmental Policy Committee. She currently serves on the board of the Institute for Market Transformation (IMT.) Former Mayor Davis has spoken on sustainability initiatives here and abroad.



### E. Christa Farmer, PhD

E. Christa Farmer is an Associate Professor in the Department of Geology, Environment, and Sustainability at Hofstra University. She finished her Ph.D. in paleoclimatology at Columbia University in 2005, studying the changes in South Atlantic sea surface temperature over the last glacial maximum through fossils. She has taught classes in Planet Earth, Environmental Geology and Natural Hazards, Global Climate Change, Paleoclimatology, and Sedimentation. Her current research includes developing records of past hurricane impacts from Long Island sediment cores, as well as studying evacuation decisions by Long Island residents before the landfall of hurricane

Sandy. She co-edited a book with J. Bret Bennington, which was published in 2014 by Elsevier, titled *Learning from the Impacts of Superstorm Sandy*.



### Sandra Garren, PhD

Sandra Garren, Ph.D. is the Director of Sustainability Research at the National Center for Suburban Studies and the Director of Sustainability Studies and an Assistant Professor in the Department of Geology, Environment, and Sustainability at Hofstra University. She holds her doctorate in Geography and Environmental Science & Policy, a master's in Teaching, and a bachelor's in Earth Science/Geology. In total, Sandra has more than 25 years of experience in both academic and environmental consulting. She has acted as principal investigator, project manager, and technical expert on an array of scientific investigations related to sustainability, greenhouse gas accounting, climate change policy, water management, energy, and,

environmental regulation. She currently leads a team of sustainability student researchers who are designing a data and policy sustainability repository and geospatial databases for communities in Long Island. Her work is interdisciplinary and is focused on applied science and policy. She has published numerous academic articles and is currently co-authoring two sustainability case study books.

## BIOGRAPHICAL SKETCHES (continued)



### James F. Gennaro

Mr. Gennaro is the Deputy Commissioner for Sustainability and Resiliency at the New York State Department of Environmental Conservation. He chaired the Council's Committee on Environmental Protection and authored more than fifty environmental laws on such issues as reducing New York City's greenhouse gas emissions 30 percent by 2030, reducing water and air pollution, protecting and preserving New York City's Upstate drinking water supply watershed, creating climate change adaptation strategies, improving the City's resiliency to major storms, restoring Jamaica Bay, increasing clean and reliable energy, protecting the city's wetlands, mandating energy audits and energy retrofits for the city's building stock, creating the first-in-the-nation local government brownfields cleanup and redevelopment program, and creating the City's Office of Resiliency. Mr. Gennaro was appointed to the New York State Department of Environmental Conservation, by Governor Andrew Cuomo in January 2014. Among his roles as Deputy Commissioner, he furthers DEC's efforts to prepare and make New York State more resilient to meet the challenges associated with climate change and to rebuild after recent storm events. Mr. Gennaro has received numerous accolades and awards for his environmental leadership, including the 2013 Environmental Quality Award from the U.S. Environmental Protection Agency. He earned his master's and bachelor's degrees from the State University of New York at Stony Brook.



### Martine Hackett, PhD

Martine Hackett is an assistant professor in the Department of Health Professions at Hofstra University. Her research interests include maternal child health, health equity, suburban public health and community based research. She is the author of the book *Back to Sleep: Creation, Conflict and Consequences of a Public Health Campaign*. She previously served as a deputy director at the New York City Department of Health and Mental Hygiene's Bureau of Maternal, Infant and Reproductive Health and was also a television producer. Martine earned a BFA in film and television from New York University, an MPH from Hunter College, and a PhD in sociology from the City University of New York Graduate Center.



### Lawrence Levy

Lawrence Levy is the Executive Dean for the National Center for Suburban Studies at Hofstra University®. During his 35 years as a reporter, editorial writer, columnist and PBS talk show host, Lawrence Levy won many of journalism's top awards, including Pulitzer Finalist, for in-depth works on suburban politics, education, taxation, housing and other key issues. As a journalist, he was known for his blending of national trends and local perspectives and has covered six presidential campaigns. He works close with Hofstra's strong academic community to shape an innovative agenda for suburban study, including a new Sustainability Studies degree, forge alliances with other institutions, not-for-profit groups and government agencies and promote the study of the suburbs nationwide. Levy is a member of a Brookings Institution advisory panel and was a keynote speaker at Brookings 2008 Metro Policy Summit in Washington, DC. Levy also led a collaboration between Hofstra and Boston College to create a first-in-the nation suburban ecology initiative, and another alliance between Hofstra and Cornell to sponsor the Local Government Leadership Institute. Before joining Hofstra, he was Senior Editorial Writer and Chief Political Columnist for *Newsday*, and remains involved in the world of journalism and politics.

## BIOGRAPHICAL SKETCHES (continued)



### Neal Lewis, JD

Neal Lewis is an environmental attorney with over 25 years experience in not-for-profit advocacy on Long Island. Since 2009, Neal has been the executive director of the Sustainability Institute at Molloy College, which coordinates the *Long Island Green Homes Consortium*, the *Long Island Clean Energy Leadership Task Force* and the *Sustainable Living Film Series*, among other projects. Neal is also an adjunct faculty member at Molloy where, (along with Andrew Manitt), he teaches the class: *Introduction to Sustainability*. Neal is a member of the Nassau County Planning Commission (2003) and he previously served on the LIPA board of trustees for four year (2009-2013). The Sustainability Institute is active regarding policy analysis on the Clean Energy Standard (NYS) and on related energy policies involving land use, building efficiency codes, and solar energy permits.



### Ronald Loveridge, PhD

Ronald O. Loveridge has 33 years of public service – as a Riverside Councilmember beginning in 1979 and as Mayor from 1994 to 2012. He is currently the Director of the University of Riverside (UCR) Center for Sustainable Suburban Development. He is a highly regarded regional, state and national leader. At the national level, he was very involved on the Executive Committee and Board of the National League of Cities, making policy calls and decisions on behalf of some 19,000 cities and towns across the nation. He also served as President of the National League of Cities in 2010. Mayor Loveridge's a member of the National Academy of Public Policy. His statewide and regional service has included Board roles on the broadest array of important organizations: the California Air Resources Board, California Forward Action Fund, California Competes, South Coast Air Quality Management District, Southern California Association of Governments, Western Riverside Council of Governments, and Inland Empire Economic Partnership. A Stanford doctoral graduate, Mayor Loveridge teaches an extremely popular political science course at UC Riverside. Loveridge's research investigates urban politics and public policy, particularly environmental policy. He is the author of *City Managers in Legislative Politics* (Bobbs-Merrill, 1971). His research has appeared in *Polity*, *Environment and Behavior*, *California Air Environment*, and *Cry California*, as well as several edited volumes.



### Bernadette Martin

Bernadette Martin is currently the Market Manager of the new Taste NY Marketplace through the Cornell Cooperative Extension Nassau County. Bernadette received a Degree in Political Science and Economic Development from the State University of New York, Plattsburgh, 1991. Bernadette became a Horticultural Therapist in 2001, providing educational programming to 175 AT-Risk kids. The program was run on a 4 acre organic farm at Green Chimney's Children Services, Brewster NY. In 2004, Bernadette was hired by the NYC Greenmarket as the Farm Inspections Coordinator, where she was instrumental in helping to cultivate the farm inspection program. Bernadette is the Founder of LI Greenmarket Inc., an organization that manages the Long Beach Farmer's Market and 3 other farmer's market locations in Nassau County and Western Suffolk County. The program's mission is to preserve regional farmland, support local food producers and fisherman while bringing fresh, healthy and local produce to Long Islanders. The program also acts as a small business incubator for small-scale food processors who want to start a business. Bernadette also facilitates an organic garden program at the NIKE School for Alternative Education in Lido Beach, NY. She has developed a vocational program for At-Risk youth to grow and sell at market, through an internship program at the Kennedy Plaza Farmer's Market providing school credit and much needed job experience.



## BIOGRAPHICAL SKETCHES (continued)



### Diane Masciale

Diane Masciale is General Manager of WLIW21 and Executive Producer of local productions at WNET, parent company of WLIW21 and THIRTEEN. This Long Island native is responsible for day-to-day operations of WLIW21, the country's 4th most-watched PBS station. As Executive Producer, she also oversees local productions including the Emmy Award-winning, *Treasures of New York*, an original series showcasing New York's cultural icons and *MetroFocus*, a daily television and multi-platform news magazine and *SciTech Now*, a weekly science and technology news magazine. Masciale also is Host and Executive Producer of WLIW Arts Beat showcasing local arts as well as arts and culture from the region and across the country. A three-time National Emmy Award-winner,

Masciale has achieved some of the highest recognition throughout her media career including the Edward R. Murrow Award, American Women in Radio & TV Gracie Award, Clarion Award, National Headliner Award, Sigma Delta Chi Award, Cine Gold Eagle, Cindy Awards, National Press Club Award, National Association of Consumer Advocates Award, Halo Award for Best Cause Marketing, Folio Awards, Long Island Press Club Awards and New York State Broadcaster Awards. She has been named one of Long Island Business News Top 50 Most Influential Women in Business in 2016.



### Christopher Niedt, PhD

Christopher Niedt is Academic Director of the National Center for Suburban Studies and Associate Professor in the Department of Sociology at Hofstra University. He studies the effects of metropolitan growth and decline on racial/ethnic and class inequality, particularly as these relate to the history, politics, and redevelopment of inner-ring suburbs. His most recent research projects focus on suburban racial/ethnic diversity, suburban social movements, and the foreclosure crisis. He is co-author of *Foreclosed America* (with Isaac Martin, Stanford University Press, 2015) and *An Uneven Road to Recovery: Place, Race, and Mortgage Lending on Long Island* (with Marc Silver, National Center for Suburban Studies, 2014), and editor of *Social Justice in Diverse Suburbs*

(Temple University Press, 2013).



### Lisa Ott

Lisa Weatherford Ott is the President and CEO of the North Shore Land Alliance, a 14-year old land trust that works to protect the last remaining open space on western Long Island's North Shore. Considered one of the nation's first mature suburbs, Nassau County faces intense sprawl and the ill effects that accompany it. Overdevelopment threatens drinking water resources and the rural quality of the area. With build out near, the North Shore Land Alliance in conjunction with The Nature Conservancy, Trust for Public Land and other local groups realized that to be effective it was necessary to raise a large amount of money fast. Since 2004 we have worked collaboratively to raise \$255 Million in public funding to purchase open space and create parks throughout western Long Island. Lisa is a native of Kentucky, graduate of the University of Kentucky with certificates in Non

Profit Management from Columbia University's School of Business and Conservation Finance through the Yale School of Forestry. She is on the boards of The Nature Conservancy on Long Island and Vice Chair for Conservation and National Affairs and Legislation for the Garden Club of America. She lives in Oyster Bay, New York, with her husband and grown-up children.

## BIOGRAPHICAL SKETCHES (continued)



### Jack Schnirnam

Jack Schnirman is the City Manager of the City of Long Beach, New York. His responsibilities include managing day-to-day operations and policy implementation of all City departments and divisions, including commissioners of police, fire, public works, parks and recreation, comptroller, law, economic development & planning, communications, and information technology. Serving as the City's chief executive before, during, and after Superstorm Sandy, Mr. Schnirman was responsible for leading all aspects of government response, including disaster preparations, mandatory evacuation, emergency response operations, and ultimately long-term recovery. As City Manager, Mr. Schnirman is transforming the "City by the Sea" and its once-aging infrastructure into a model of resiliency, sustainability, and innovation that constantly works to improve the quality of life for its residents and visitors. He has reformed local government in Long Beach with an innovative management agenda that manages and measures for performance, including a 311-style smart phone application, and the region-leading "Long Beach Listens" citizen engagement effort, leveraging social media strategy, interactive surveys, and community engagement meetings to ensure Long Beach is responsive to local residents. Mr. Schnirman holds a Master's in Public Policy from Harvard University's Kennedy School of Government and a B.A. in International Relations from Tufts University.



### Gail M. Simmons, PhD

Dr. Gail M. Simmons became Provost and Senior Vice President for Academic Affairs at Hofstra in July 2015. Dr. Simmons is responsible for overseeing the full range of administrative responsibilities for the smooth operation of the academic units of the University including all of the University's Schools and Colleges as well as the libraries of the University. Prior to joining Hofstra, Dr. Simmons served as provost and vice president of academic affairs as well as a professor of biology at Manhattanville College. Dr. Simmons has also served as a board member of the YWCA of White Plains and Central Westchester, Bet Am Shalom Synagogue in White Plains, the Philomusica Chorus in East Brunswick, N.J., and the New Jersey Marine Sciences Consortium as well as associate editor of the Journal of Molecular Evolution and a panelist for the National Science Foundation. She recently joined the board of the Cradle of Aviation Museum in Garden City, New York. Dr. Simmons is a geneticist and biologist. She received her PhD from the Department of Genetics at the University of California, Davis, and a BS in Biological Sciences from the University of Pittsburgh.

## BIOGRAPHICAL SKETCHES (continued)



### Geri Solomon

Geri Solomon has been at Hofstra University since 1988 as the University Archivist and was made the Assistant Dean of Special Collections in 2001. She oversees three areas including the University Archives, Long Island Studies, and Rare Books and Manuscripts. Her responsibilities include the preservation, processing, exhibition and promotion of collections in those three departments. She teaches classes based on the materials in the collection including a seminar using historical objects as the basis for study. She holds advanced degrees from New York University in History as well as Archival Management. She received the Annual Archives Award for Program Excellence in a Historical Records Repository from the Board of Regents and the New York State Archives and has served on the NY State Historical Records Advisory Board.



### Annetta Vitale

Annetta Vitale is also an Environmental Scientist / Oceanographer and Registered Nurse. Currently she is an adjunct faculty member teaching Sustainability Studies at Hofstra University and Environmental Science at Nassau Community College as well as the Director of Patient Services for Helping Hands Home Care. She has worked as a civilian Oceanographer for the Naval Oceanographic Office transitioning new remote sensing and modeling technology to Naval operation as well as a Marine Resource Specialist for the NYS Department of Environmental Conservation. Annetta Vitale is the owner operator of Reed Channel Farms located in Oceanside, NY. Engaged in permaculture growing fruits, grapes and herbs, with a mission to provide the community an opportunity to obtain premium high quality natural local honey, herbs and jams through sustainable farming practices. Reed Channel Farms maintains several hives throughout Long Island. Her research interests include climate change and the impact on human health as well as local food policies and practices for sustainable farming and apiculture.



# Travel Information

## Location of Hofstra University

Hofstra University is located in Hempstead, Long Island, New York, about 25 miles east of New York City, less than an hour away by train or automobile. The Long Island Rail Road (LIRR) has frequent trains to the Hempstead Station and Mineola Station from Pennsylvania Station, located at 34<sup>th</sup> Street and 7<sup>th</sup> Avenue, New York City, as well as from the Flatbush Avenue Station in Brooklyn, New York. One can use the local taxi service to travel to the Hofstra Campus.

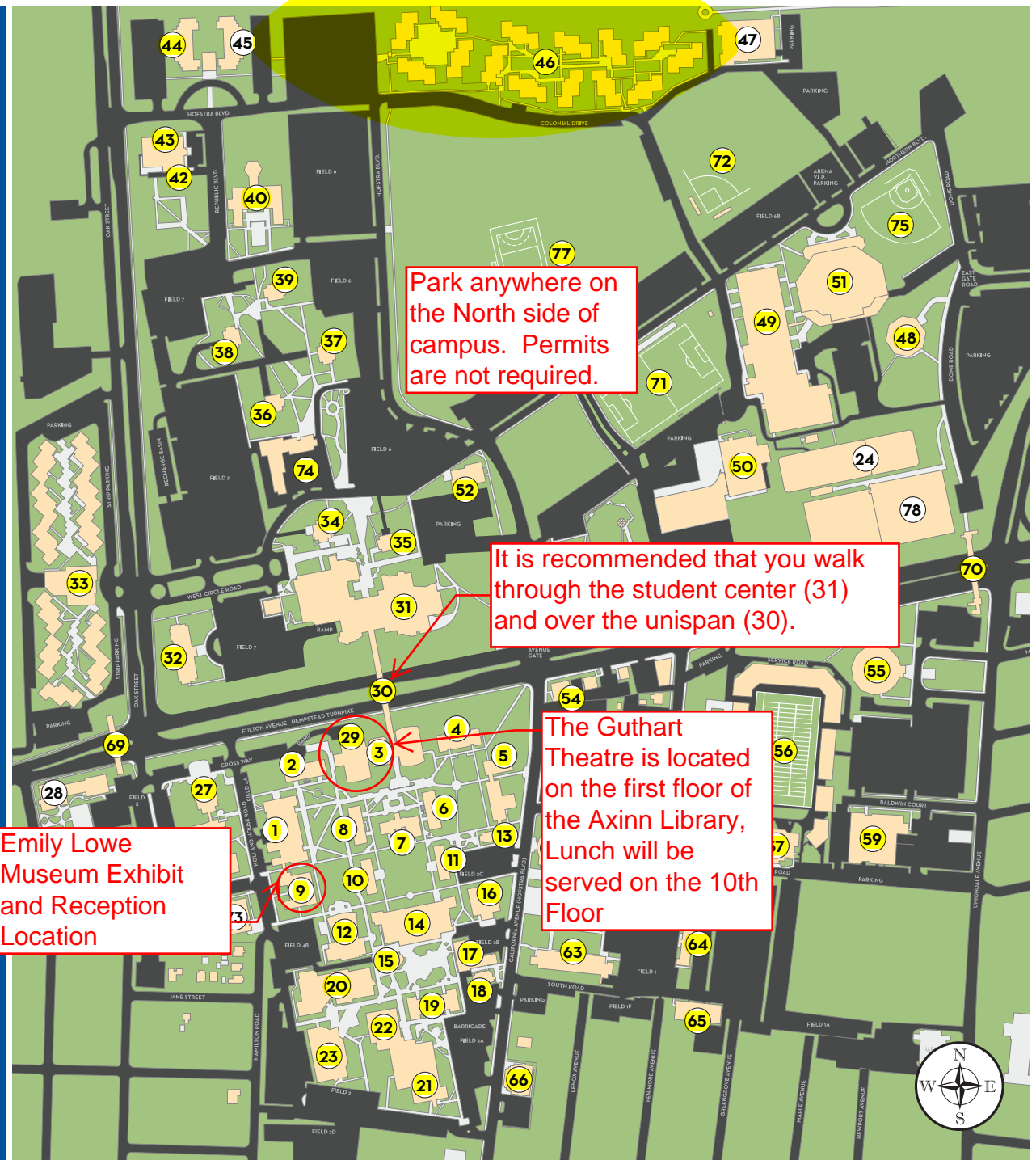
### LOCAL TAXI SERVICE:

All Island Taxi Service	516-481-1111
Hempstead Taxi	516-489-4460
Pub Taxi Service	516-483-4433
Ollie's Airport Service	516-437-0505
	516-352-6633
	718-229-5454

### BY CAR:

Travel on the Long Island Expressway to exit 38, Northern State Parkway, to Meadowbrook Parkway South (exit 31A). Take Meadowbrook Parkway to exit M4 (Hempstead Turnpike). Proceed west on Hempstead Turnpike (Route 24W) to the Hofstra campus (approximately one mile).

# CAMPUS MAP



## Map Legend

Adams Hall.....	25
Adams Playhouse.....	12
Admission Center/Bernon Hall.....	27
Au Bon Pain.....	18
Axinn Hall (Law).....	66
Axinn Library.....	3
Barnard Hall.....	10
Berliner Hall.....	61
Bernon Hall/Admission Center.....	27
Bill Edwards Stadium.....	75
Breslin Hall.....	23
Brower Hall.....	11
Bubble.....	78
Butler Annex.....	65
Café on the Quad.....	15
Calkins Hall.....	14
Career Center/M. Robert Lowe Hall.....	64
C.V. Starr Hall.....	60
Davison Hall.....	8
Field Hockey Stadium.....	77
Fitness Center, David S. Mack.....	47
Gittleson Hall.....	63
Hagedorn Hall.....	55
Hauser Hall.....	2
Health and Wellness Center.....	42
Heger Hall.....	4

The Lawrence Herbert School of Communication.....	20
Hofstra Dome.....	48
Hofstra Hall.....	7
Hofstra Northwell School of Medicine at Hofstra University.....	50
Hofstra University Museum.....	9
HofUSA.....	40
Human Resources Center.....	52
Kushner Hall.....	22
Library Technical Services and Resource Center.....	3
Lowe Hall.....	9
Margiotta Hall.....	57
Mason Hall/Gallon Wing.....	5
Maurice A. Deane School of Law.....	21
McEwen Hall.....	17
Memorial Hall.....	1
Monroe Lecture Center.....	62
New Academic Building.....	73
Pedestrian Bridges.....	69, 70
Phillips Hall.....	6
Physical Education Center, David S. Mack/Swim Center.....	49
Physical Plant.....	59
Public Safety and Information Center, David S. Mack.....	54
Roosevelt Hall.....	19
Saltzman Community Services Center.....	28
Shapiro Alumni House.....	58
Soccer Stadium.....	71
Spiegel Theater.....	13

Sports and Exhibition Complex, David S. Mack.....	51
Stadium, James M. Stuart.....	56
Student Center, Sondra and David S. Mack.....	31
Tennis Courts.....	24
Unispan.....	30
University Club/Mack Hall.....	53
University College Hall/Skodnek Business Development Center.....	43
University Field.....	72
Weed Hall.....	26
Weller Hall.....	16
West Library Wing.....	29

## Residence Halls

Alliance Hall.....	34
Bill of Rights Hall.....	35
Colonial Square.....	46
Constitution Hall.....	36
Enterprise Hall.....	39
Estabrook Hall.....	37
Graduate Residence Hall.....	74
Nassau Hall.....	44
Stuyvesant Hall.....	32
Suffolk Hall.....	45
The Netherlands.....	33
Vander Poel Hall.....	38