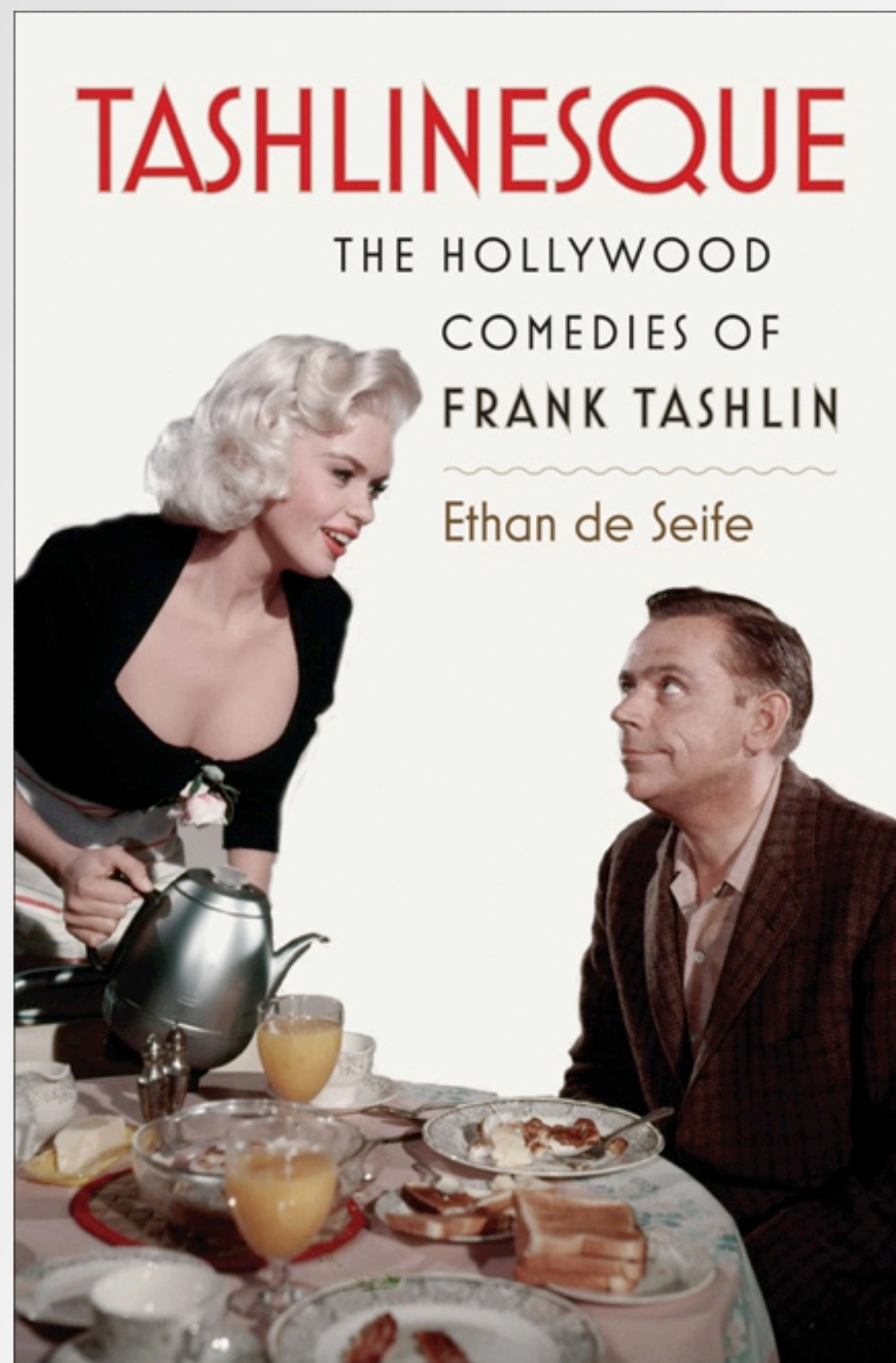


ETHAN DE SEIFE • ASSISTANT PROFESSOR OF FILM STUDIES • RTVF DEPARTMENT  
*ETHANDESEIFE.WORDPRESS.COM*



My recent book, *Tashlinesque*, investigates the career of Frank Tashlin, an important and overlooked director of very funny and visually inventive American film comedies.

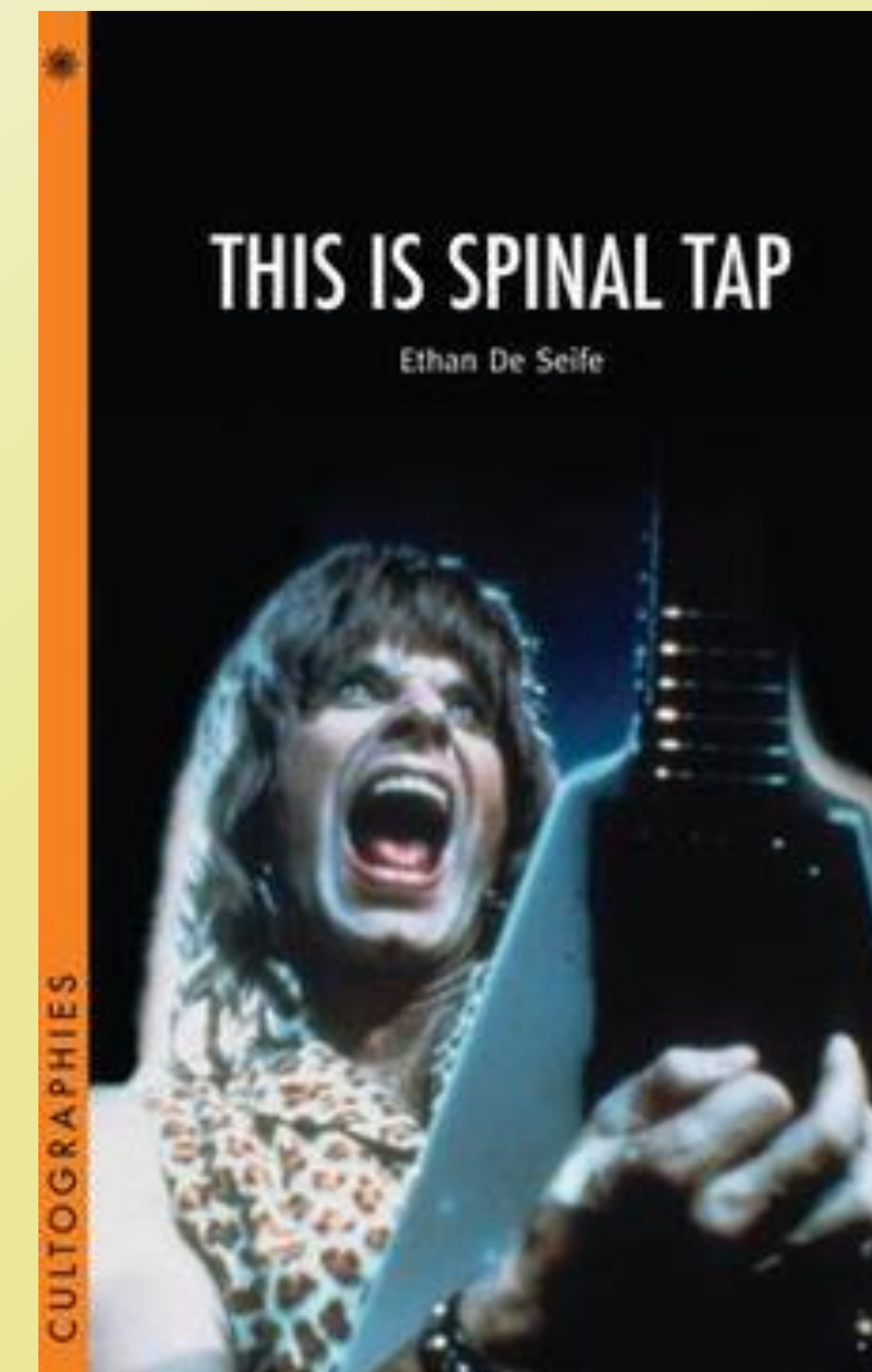
Tashlin made Looney Tunes cartoons as well as live-action features with such performers as Bob Hope, Jerry Lewis, and Jayne Mansfield.



All previous studies of Tashlin's work operate under the assumption that, because he worked in both animation and live-action, Tashlin made cartoons that “anticipate” his live-action features, and that his live-action features are somehow “cartoony.”

My book disputes this claim as too simplistic, taking a historical/aesthetic approach to understanding Tashlin's films. I use several new contexts instead:

- Vaudeville history and aesthetics
- Economic and censorship policies of the film industry
- Performative styles in mid-century Hollywood
- Sexual comedy and social satire



I have also written a book on the great film *This Is Spinal Tap*.

I like to think that this book goes to 11.



Within the last 18 months, I have also published articles and delivered talks on a wide range of subjects within film and media studies.



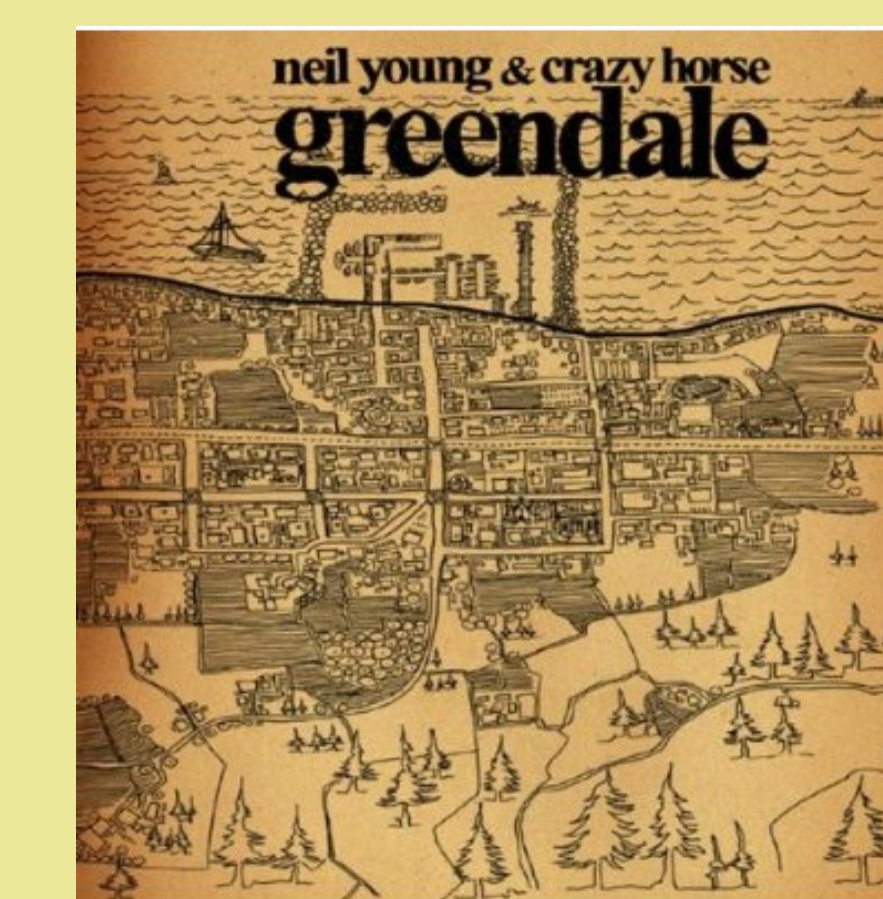
The aesthetics of Methocel, the odd (and chemically bizarre) ooze used to “play” slime in the *Ghostbusters* films and the oil in *There Will Be Blood*.



The peculiar narrative patterns in the martial-arts films of Hong Kong director Chang Cheh.



The star persona of rapper/actor Ice Cube.



Neil Young's fascinating multi-media *Greendale* project.



The directorial style of famed exploitation filmmaker William Castle.