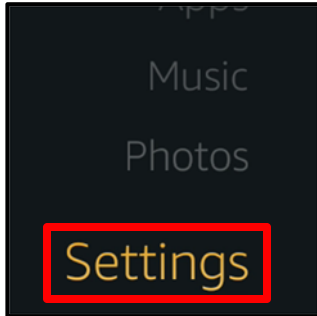
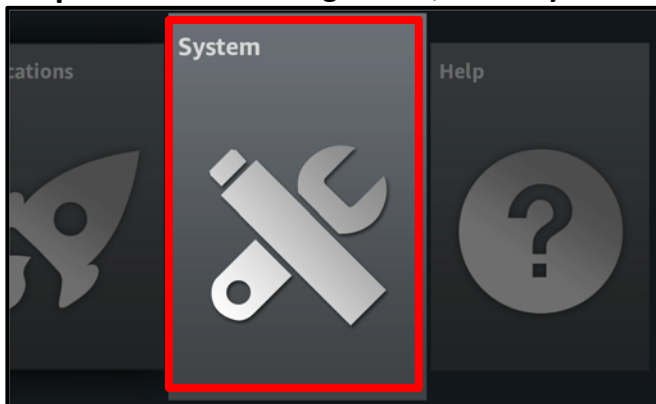


Locating the MAC/Physical Address of an Amazon FireTV and FireTV Stick

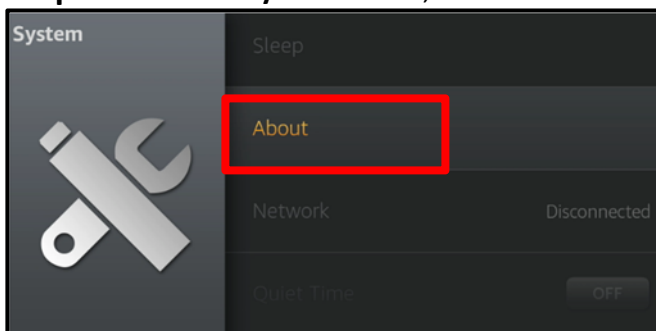
Step 1: From the home screen, scroll down and select **Settings**.



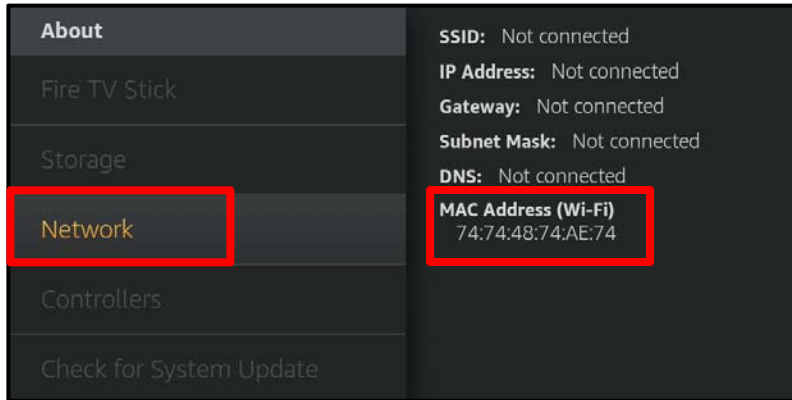
Step 2: From the **Settings** menu, select **System**.



Step 3: From the **System** menu, select **About**.



Step 4: Scroll down to **Network**. The MAC/Physical address(s) of your device will be listed here.



Need Help? Get in touch with Student Computing Services!

516-463-7777 option 1 | SCS@Hofstra.edu | www.Facebook.com/HofstraSCS