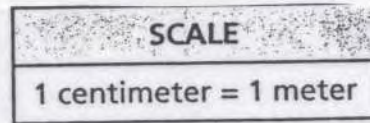
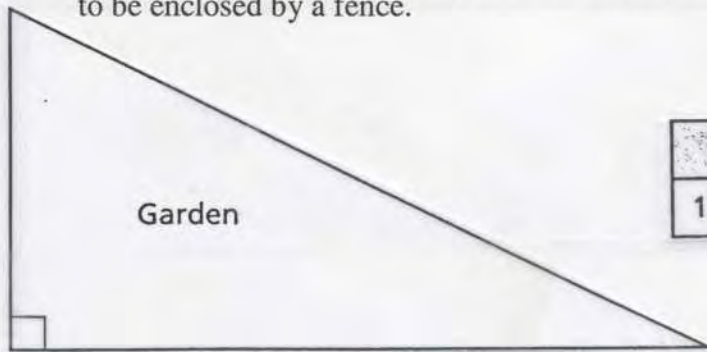


1. Use your ruler to help you solve this problem.

A garden is in the shape of a triangle as shown in the figure below. The garden is to be enclosed by a fence.

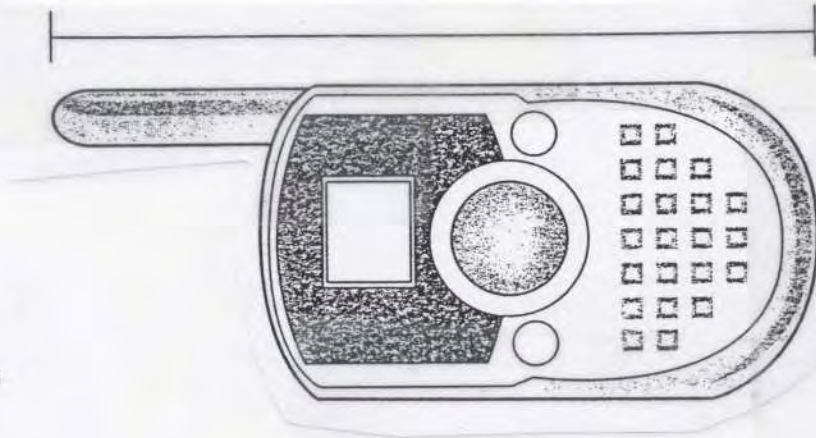


Based on the scale, how much fencing is needed to enclose the garden?

- F 19.1 meters
- G 20.7 meters
- H 23.5 meters
- J 26.6 meters

2. Use your ruler to help you solve this problem.

Which measurement is closest to the total length of the two-way radio shown below?



- A 5 centimeters
- B 5 inches
- C 10 centimeters
- D 10 inches

3. A car traveled 187 miles in 3 hours and 24 minutes. What was the average speed of the car in miles per hour?

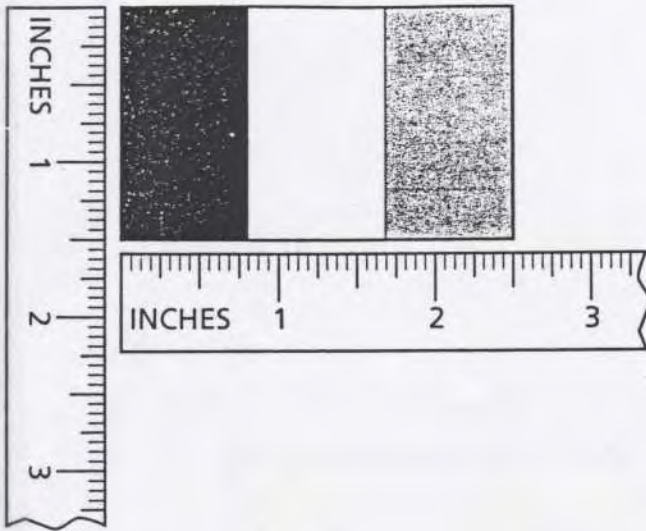
- A 50
- B 55
- C 58
- D 62

5. A dinner plate has a diameter of 7 inches. Approximately how many inches is the circumference of the plate?

- F 14 inches
- G 22 inches
- H 44 inches
- J 154 inches

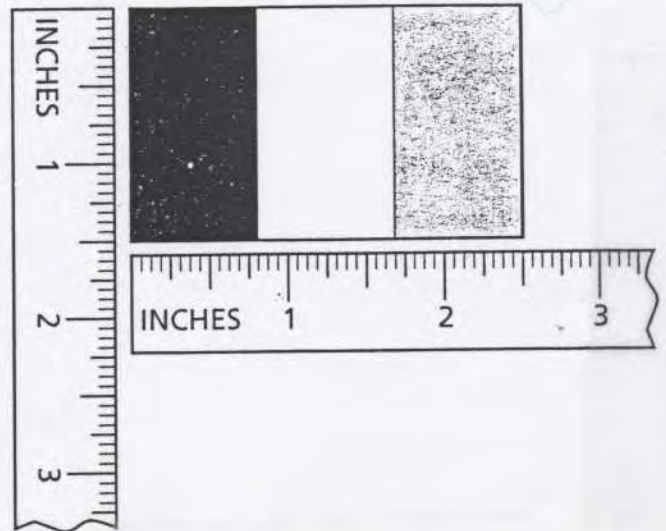
6. In social studies class, Cole is making a scale drawing of a flag. The flag measures 24 inches high by 36 inches wide, having three vertical stripes each 12 inches wide. Which drawing shows a correct model of this flag?

SCALE  $1/4$  inch = 1 foot



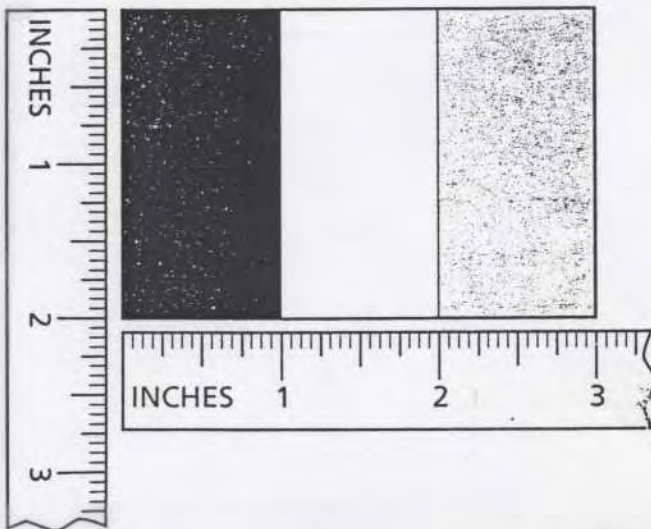
A

SCALE  $1/2$  inch = 1 foot



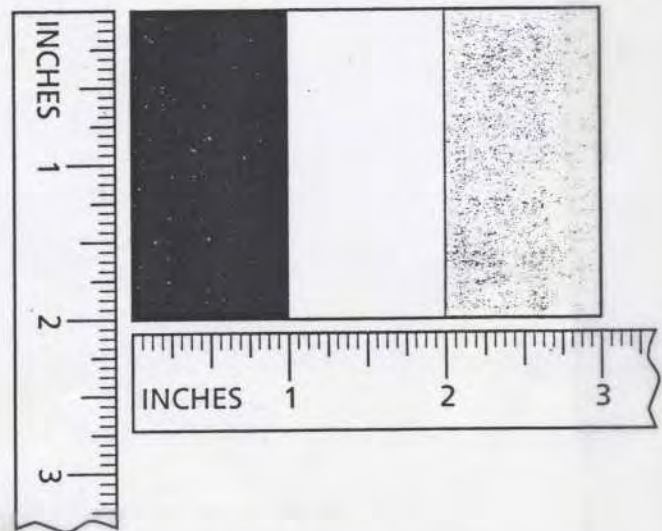
C

SCALE  $1/2$  inch = 1 foot



B

SCALE 1 inch = 1 foot



D

7. Todd made the following measurements of each days snowfall.

SNOWFALL MEASUREMENTS

Day	Snowfall
Friday	3.25 inches
Saturday	5.75 inches
Sunday	2.4 inches

What is the mean snowfall, in inches, for the 3 days shown?

Show your work.

Answer \_\_\_\_\_ inches

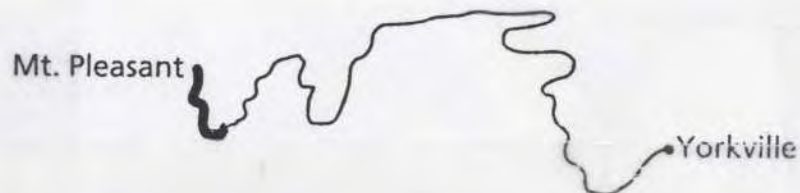
8. The Suez Canal links the Mediterranean Sea to the Red Sea and is 108 miles long. If a ship is traveling the canal at a speed of 1.5 miles per hour, how many hours will it take to travel the length of the canal?

- A 72
- B 90
- C 110
- D 162

9. A drawing of the Greensburg Airport uses a scale of 1 centimeter = 300 meters. Runway A is drawn 12 centimeters long. How many meters is the actual length of the runway?

- F 300
- G 360
- H 3,000
- J 3,600

10. Ben is hiking from Mt. Pleasant to Yorkville. He is following the trail shown on the map below.



The darker section of trail shows how far Ben has hiked, a distance of approximately 4 miles. ESTIMATE how many more miles Ben has to hike to get to Yorkville.

Estimate \_\_\_\_\_ miles

On the lines below, describe the process you used to determine your estimate.

---

---

---

---

## MULTIPLE CHOICE ANSWERS

- 1.
- 2.
- 3.
- 4.
- 5.
- 6.
- 7.
- 8.
- 9.
- 10.