



# *Builders and Founders*

## **An exhibition of materials from the Hofstra University Archives**

This online exhibition depicts 14 of the University's south campus buildings completed before 1965. You will see an enlarged photo of a building with a brief outline of the buildings' fun historical trivia facts, current uses, square footage, architect and completion date.

# Howard S. Brower

## (March 12, 1884-March 4, 1968)



- Howard S. Brower was a Long Island businessman and partners with William S. Hofstra. Together they ran the Nassau Lumber Company based in Hempstead with a branch office in Hicksville.
- Brower and James Barnard served as co-executors for Mrs. Hofstra's estate.
- It was Howard Brower and Truesdel P. Calkins who first conceived of the idea of using the property and funds from the estate for a college.
- Brower was elected to the Hofstra Board of Trustees in 1937 and served as acting president from 1942-1944. He was Chairman of the Board of Trustees from 1944-1945 and at the time of his death, Trustee Emeritus of Hofstra.
- In addition to his contributions to the University, he was one of the founders of the West Hempstead National Bank, Mayor of the Village of Hempstead, and owner and president of the Brower Lumber Company.

# Brower Hall

## Did You Know?

- Built in 1936
- 9,030 sq. ft
- Designed by Aymar Embury
- When the building first opened the fencing team had their matches in Brower Hall. In the summer of 1957, Brower Hall's "flamingo room" was home to the Arithmetic Workshop which helped local children with math skills.





# James H. Barnard

## (Died March 28, 1939)



- James H. Barnard was a native of Chicago where he was a corporate lawyer. He retired in 1920 and relocated to New York where he married Ms. Lotta Lacey in 1925. Barnard was co-Trustee of the estate of Mrs. Hofstra.
- Along with Mr. Howard Brower, Barnard was active in the establishment of Hofstra College in 1935. On Oct. 8, 1937, Hofstra College dedicated its newest building in his honor. Mr. Barnard died on March 28, 1939 in New Orleans.

# Barnard Hall

## Did You Know?

- Built in 1937
- 10,295 sq. ft.
- Designed by Aymar Embury
- A Mitchel Field Air Force pilot crashed into Barnard Hall during take-off on March 23, 1943.
- The pilot was killed but no students were hurt as the crash occurred at 5:15 a.m. The government blamed the number of trees on the Hofstra property for the crash and removed 100 of them by court order. Later, it was determined that the accident occurred due to pilot error and the government paid Hofstra the cost of the replacement value of the trees.



# Dr. Truesdel Peck Calkins

## (October 7, 1877-June 8, 1942)



- Dr. Truesdel Peck Calkins was a businessman and an educator. Along with Howard S. Brower, Dr. Calkins first induced New York University to use the Hofstra estate for the establishment of a Nassau college. Subsequently, when the association with New York University was terminated in 1937, Dr. Calkins became the first president of the college, having previously served as Chairman of its Board of Trustees. He remained President until his death in 1942.
- Dr. Calkins was president and director of the Franklin Shops Inc. and the Hempstead Apartment Company. He was a director of the Second National Bank of Hempstead and Central Nassau Inc. He installed the supervisory system in Hempstead schools while he headed the local school system from 1915-1932. He was also a director of the Bureau of Appointments and professor of education at New York University from 1932-1938.



# Calkins Hall

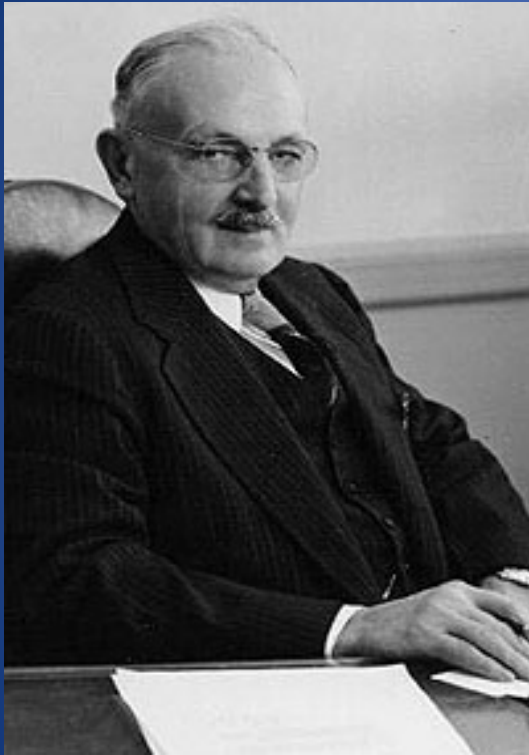
## Did You Know?

- Built in 1938
- 56,504 sq. ft.
- Designed by Aymar Embury with later alterations by Louis Jensen.
- 1<sup>st</sup> Floor dedicated to Alex Rosenberg Gallery on May 12, 1995, which displays student artwork and pottery.
- When constructed in 1938, Calkins was a gymnasium. This lasted until February 24, 1970 when the building was renovated and then reopened as Calkins Hall. The first Shakespeare performances were held in Calkins with a replica of the Globe Theater being set up on the gym floor.



# Emil R. Heger

## (January 22, 1875-June 11, 1958)



- Emil R. Heger was a banker and financier. He became a member of the Board of Trustees of Hofstra College on October 31, 1957 and served until his death in 1958.
- Heger was president of the Bank of Malverne for twenty years and later became a vice president of the Meadow Brook National Bank when the two banks merged in 1957. He was a member of the board of directors of the Lynbrook Savings and Loan Association and a director of the Nassau County Clearing House Association.



# Heger Hall

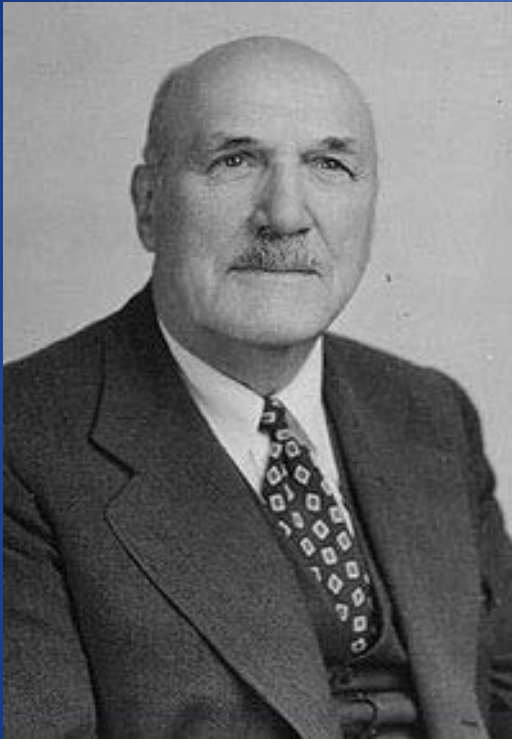
## Did You Know?

- Built in 1957
- 15,174 sq. ft.
- Designed by Aymar Embury
- Emil Heger, a Long Island bank president, gave \$250,000 for the construction of the building which bears his name. He explained that he “only had half a dozen years of formal education and six months of night courses...” yet he believed in providing for secondary education. He then presided over the “tree-chopping” ceremonies in 1950 when President John Cranford Adams took an axe to a tree on the Hofstra property where the building was going to stand.



# Arthur C. Phillips

## (March 3, 1877-May 1, 1952)



- Arthur C. Phillips served as a Trustee from Jan. 19, 1937 until the time of his death in 1952. He became Chairman in 1942 but resigned that position in 1944 to become Treasurer and Executive Member. He also served on the Finance and Endowment, Building and Grounds, Faculty, Athletics, and Nominating Committees. At the time of his death, Phillips was chairman of the board of the Franklin National Bank and general manager of the Franklin Shops Inc. in Hempstead.

# Phillips Hall

## Facts & Current Uses

- Built in 1953
- 16,704 sq. ft.
- Designed by Aymar Embury
- Budget Office,  
Purchasing  
Department
- Controller's Office,  
Accounts Payable,  
Financial Affairs,  
Grants
- Student Affairs
- Office of Parent and  
Family Programs





# George Henry Hauser

## (March 9, 1896-May 26, 1958)



- George Henry Hauser was an Engineer and Industrialist. Hauser became a Trustee of Hofstra College beginning in January of 1944 and served until his death in 1958.
- Hauser was Chairman of the Board from 1945 until October of 1955 and he served on numerous committees including; Executive Committee (1945-1950), the Nominations Committee (1951-1952), Dormitory Problems (1952), and Buildings and Grounds (1955). Upon his retirement, the new chemistry building was dedicated as Hauser Hall, on October 12, 1955, in recognition of his interest and accomplishments in the field of science.
- Mr. Hauser was president of Liberty Aircraft Products Corporation. In addition to his Hofstra service he was a trustee of the Mather Memorial Hospital in Port Jefferson. Mr. Hauser was on the Board of Directors of several Long Island banks and was named vice president of the First National Bank of Mineola in 1950.

# Hauser Hall

## Did You Know?

- Built in 1955
- 22,016 sq. ft.
- Designed by Aymar Embury
- The dedication of Hauser Hall coincided with the celebration of Hofstra's 20<sup>th</sup> Anniversary. The events included a boxed lunch, an ROTC review on the drill field, speeches, and the dedication of the Chemistry Building. This was followed by a soccer game between Hofstra and Kings Point.



# Emily Lowe

## (Died December 19, 1966)



- Emily Lowe was a painter born in New York City. In 1953, she received an Honorary L.H.D. Degree from Hofstra. Hofstra's Lowe Hall was dedicated to her in 1963.
- A student of Columbia, 1921-1925, and the New School of Research, 1928-1935, Emily Lowe received her art education from the Art Students League in New York and from the Academie Julien in Paris. Her paintings are a part of many permanent collections including those of the Modern Art Museum in Paris and the Metropolitan Museum in New York.



# Lowe Hall

## Facts & Current Uses

- Built in 1956
- 32,944 sq. ft.
- Designed by Aymar Embury
- When wings were added to the building in 1963, it was dedicated to honor prominent painter and patron of the arts, Emily Lowe.
- Emily Lowe Gallery, Hofstra Museum
- Drama and Dance Department



# Theodore Roosevelt (1858-1919)



- Twenty-sixth President of the United States (1901-1909), Roosevelt lived on Long Island at Sagamore Hill, Oyster Bay. Eleanor Roosevelt, his daughter-in-law, was a Hofstra Trustee from 1949 until her death in 1960.

# Roosevelt Hall

## Facts & Current Uses

- Built in 1957
- 40,134 sq. ft.
- Designed by Aymar Embury, who incorporated a rifle range, built in 1953 into its design
- Global Studies and Geography Department
- School for University Studies, Off-Campus Education, Study Abroad Programs, Law Review
- Mathematics Department
- Classrooms





# Dr. John Cranford Adams

## (October 11, 1903-November 24, 1986)



- Oct. 11, 1903-Nov. 24, 1986 Dr. John Cranford Adams served as Hofstra's second president from 1944-1964 and was President Emeritus at the time of his death. The campus theater is known as the John Cranford Adams Playhouse and there is a John Cranford Adams Chair in Literature. He was the principal founder of Hofstra's annual Shakespeare Festival. It was from his model that Hofstra's Globe Stage, a 5/6 replica of Shakespeare's stage, was built in 1950.
- Dr. Adams began his career as an instructor in English at Syracuse University in 1928. Two years later, he joined Cornell University as an instructor. In 1937 and 1938, he was a Senior Research Fellow at the Folger-Shakespeare Library in Washington, D.C. and for many years, the Folger-Shakespeare Library exhibited the model of the Globe Playhouse that Dr. Adams had designed based on his Ph.D. research. The Globe Playhouse model is now on exhibition in the Axinn Library.

# John Cranford Adams Playhouse

## Did You Know?

- Built in 1958
- 40,504 sq. ft.
- Designed by Aymar Embury. He also did alterations in 1961-1963.
- In 1974, the building was dedicated to Hofstra President Dr. John Cranford Adams
- The Hofstra Debate Team went up against the Cambridge Team in the Playhouse in 1959 and the question they tried to settle was “the greatest obstacle to world peace.” Also in 1959, the Hofstra College Induction ceremony featured The Honorable Hendrik J. Hofstra, a Member of The Netherlands Parliament, who presented the Friesian Flag and addressed the students and faculty at a convocation in the Playhouse. Francis Ford Coppola, class of '60, explained to reporters that he once sat in the excavation of the building and imagined he'd be famous one day! A variety of notables have been hosted in the Playhouse including candidate Robert F. Kennedy (who visited in 1964), Presidents Gerald Ford (in 1989) and Jimmy Carter (in 1990), actress Jennifer Lopez, who received an award in 1998.



# Kate Trubee Davison

## (February 2, 1871-January 31, 1961)



- Kate Trubee Davison was a philanthropist and humanitarian. In recognition of her contributions to society, Hofstra College awarded her the degree of Doctor of Laws on June 10, 1951. On February 2, 1958, Hofstra named a physics building Kate Davison Hall. Her son, Frederick Trubee Davison, became a member of the Board of Trustees at Hofstra on October 16, 1952 and became Trustee Emeritus in 1964.
- Mrs. Davison organized the Red Cross Nassau County Chapter in 1917 and was its chairman for twenty seven years. She gave the county its first Red Cross Chapter house in 1918.



# Davison Hall

## Facts & Current Uses

- Built in 1956
- 19,095 sq. ft.
- Designed by Aymar Embury
- Anthropology Department
- Sociology Department
- Speech-Language-Hearing Sciences Department
- Classrooms



# Kate Mason Hofstra

## (June 5, 1854-September 15, 1933)



- Kate Mason Hofstra was born in Boston in 1854. She married William Hofstra in New Orleans and they moved to Hempstead, New York in 1903. It was in 1904 that their home, "The Netherlands" was completed. William died in 1932 leaving Kate the bulk of his estate. When she died in 1933 she stipulated in her will that, with the exception of several monetary and gift disbursements, the estate be set up for charitable or public use as a memorial to her husband, William Hofstra. Two years after Kate's death, New York University's Nassau College-Hofstra Memorial opened its doors.
- Mrs. Hofstra was vice president of the Bide-a wee Home Association in New York City from 1903 until her death in 1933. She was also president of the Atlantic Cat Club. Her fondness for animals prompted her to leave enough money to care for those pets that survived her, including: twenty-five cats, four dogs, and three parrots.

# Mason Hall

## Did You Know?

- Built in 1938
- 21,762 sq. ft.
- Designed by Aymar Embury
- The Gallon Wing was added in 1958 and designed by Embury and Jensen.
- The Emily and Jerry Spiegel Theater was also built in 1958 and renovated in 1986.
- The building was dedicated in 1941 to honor Kate Mason Hofstra.
- The building was first named for Rufus D. Smith, who was dean of students in the late 1930s, but after the split from NYU the name was changed to honor Kate Mason Hofstra. Smith, an administrator who was appointed by the NYU administration, went back to NYU after Hofstra gained its independence.





# Leroy J. Weed

## (1878-June 8, 1961)



- Leroy J. Weed served on the Board of Trustees of Hofstra College from February 3, 1944, was Chairman from 1955-1959, and remained on the Board until 1961.
- Weed was partner and director of Ginn and Company, New York City book publishers, 1903-1952. In 1913 and 1914, he was a member of the State Legislature. He was national president of his fraternity, Psi Upsilon, from 1950-1957 and was the first president of the Long Island Choral Society.

# Weed Hall

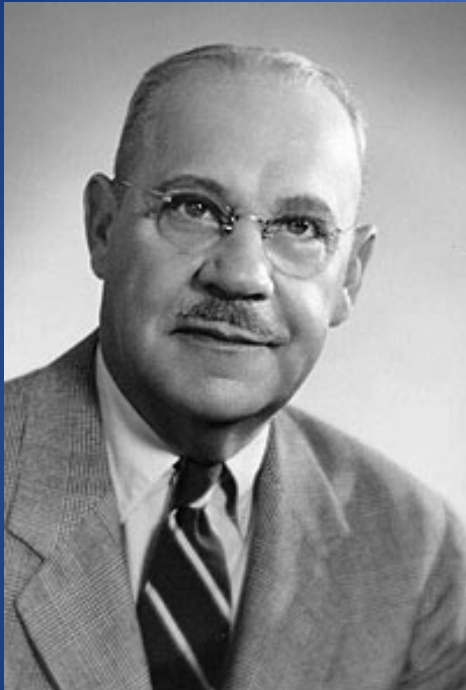
## Facts & Current Uses

- Built in 1960
- 20,784 sq. ft.
- Designed by Aymar Embury while Louis Jensen designed the basement laboratories
- Engineering, Technology and Public Policy, Center for Technology Education
- Classrooms



# Augustus B. Weller

## (February 17, 1894-October 27, 1977)



- Augustus B. Weller a banker, became a member of the Board of Trustees at Hofstra on December 24, 1943 and in March of 1966, became Trustee Emeritus.
- Mr. Weller was instrumental in the campaign to change the status of Hofstra from a college to a university, a plan that became a reality in 1963. He also helped develop Hofstra's north campus on land that was formerly part of Mitchel Field Air Force Base and was active in founding the Hofstra School of Law. The University's administration building on the south campus was named Augustus B. Weller Hall in 1962.
- Weller was president of the Meadow Brook National Bank and during World War II, served as Nassau County's rationing administrator, a voluntary position for which he later received the Nassau County Distinguished Service Award.



# Weller Hall

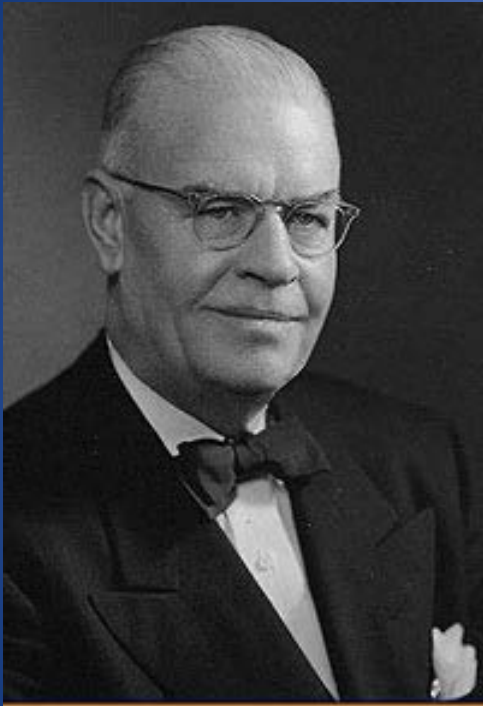
## Did You Know?

- Built in 1962
- 35,134 sq. ft.
- Designed by Aymar Embury and renovated in 1991
- Weller Hall was taken over by students who staged a sit-in in April and May of 1969, as this was the building that housed the administrative offices in those days. According to the president's report after the sit-in, the students cleaned up after themselves, even sweeping the floors of debris!



# Charles Edson Adams

## (October 7, 1891-November 27, 1968)



- Charles Edson Adams was a businessman who served on the Board of Trustees beginning on Oct. 25, 1945 and served as chairman, 1959-1963. In 1965, a newly completed mathematics and science building was named after him on Hofstra's south campus. In Sept. 1967, he became Trustee Emeritus.
- A graduate of Ohio State University with a degree in engineering, Adams became the chief engineer of the Long Island Rail Road in 1947 and served as the chief engineer of the eastern division of the Pennsylvania Railroad during World War II.
- Adams was president of the Harborside Terminal in Jersey City, N.J. from 1949-1959 and served on the board of directors of the Commercial Trust Co. and the Provident Institute of Savings, both in Jersey City. He was also president of the Jersey City Chamber of Commerce.

# Adams Hall

## Facts & Current Uses

- Built in 1965
- 21,402 sq. ft.
- Designed by Louis Jensen who also made alterations in 1970
- Computer Science Department
- Classrooms

