

Digital Photo Collections

The staff of the Special Collections Department utilizes CONTENTdm software to digitize images from our rich collection of photographs. CONTENTdm is the leading digital management software for libraries, and is also popular with local history societies and other groups. The software helps us store, manage, and deliver our digital collections to the Web. Currently, our collections are published to the Long Island Library Resources Council's (LILRC) Long Island Memories digitization program. (LILRC is a Long Island-based resource sharing organization of which Hofstra University is a member.)

There are a variety of methods to view our digital collections:

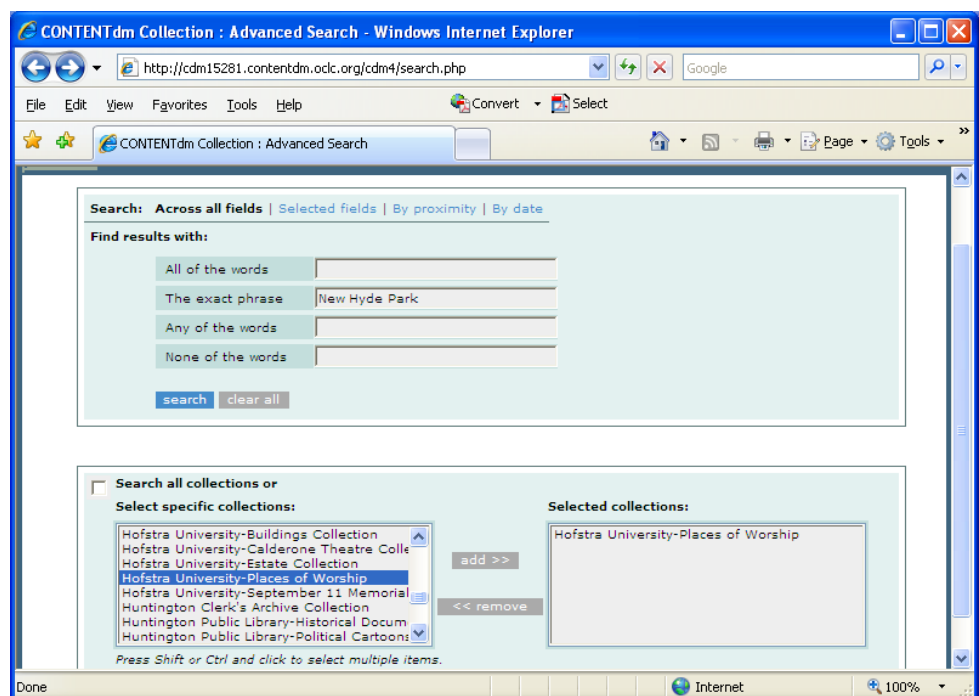
1. To browse a particular collection, click on the "Access this Collection" button beneath its description. (The collection's finding aid and/or online exhibit can also be accessed by clicking on the appropriate button). Then simply use the scroll bar to view items on the page retrieved. To view detailed information about a photograph, click on its thumbnail or title. To continue browsing, click on another page number at either the top or bottom of page you are viewing. You can also click on "previous" or "next." Please note that items on each page are arranged alphabetically by title.
2. To search a collection by using a specific term, click on the "Access this Collection" link beneath its description. Then, at the top of the page retrieved, click on "Advanced Search." Next, insert your search term into one of the four fields in the box at the top of the page retrieved. Then go to the box at the bottom left and uncheck "Search all collections." Use the scroll bar to find the collection you wish to search. Highlight the collection name and click "add." (Note: this process may be repeated to search multiple collections). Click "Search" to complete the process. From here, you can follow the instructions above for browsing a collection.

Example of an advanced search:



(click on the graphic to enlarge)

**For more detailed information on searching a particular collection, or on searching across all the collections in *Long Island Memories*, click on "Help" at the top of any page within a collection.





Searing-Roslyn United Methodist Church, Albertson, c.2000

Places of Worship Collection

In the year 2000, Hofstra University alumnus Robert L. Harrison began his quest to photograph all the places of worship in Nassau County. Eighteen months and over 3000 miles later, he had completed a stunning visual record of the religious diversity in this rapidly changing area of Long Island. This collection contains all of the images captured by Harrison during his photographic odyssey. (Note: Harrison added a small number of photographs to the collection in 2002. Also, the collection does include some photographs of places of worship located in Suffolk County.)



Access the Collection



Collection Finding Aid



September 11th Memorial Park, Setauket, c.2006

September 11 Memorial Collection

Shortly after the tragedies of September 11, 2001, the Special Collections Department at Hofstra University established its September 11 Project Collection and began collecting a wide variety of material related to the devastating events of that day. Later, after receiving a Documentary Heritage Program grant from the New York State Archives, we began work on locating and photographing all of the permanent September 11 memorials and monuments on Long Island. Robert L. Harrison of East Meadow was chosen as our photographer and we now have over 800 photographs in the collection. If you have information about September 11th memorials or remembrances you would like to add to the collection, please contact us at: LISI@Hofstra.edu



Access the Collection



Collection Finding Aid



William S. Hofstra, c.1920

Hofstra Estate Collection

Hofstra University, founded in 1935, was named after William Sake Hofstra and Kate Mason Hofstra. Research has traced the Hofstra's history back to 1830 in the Province of Friesland in The Netherlands. This collection contains various photographs ranging from 1904-32 from the Hofstra estate in Hempstead, New York.



Access the Collection



Online Exhibit



Cove Theatre,
Glen Cove, 1927

Calderone Theatres Collection

Salvatore Calderone (1878-1929) and his son, Dr. Frank Calderone (1901-1987), were visionary theatre operators in Nassau County, N.Y. (Dr. Calderone was also a noted physician and health officer.) Their Calderone theatre circuit brought quality entertainment—in the form of live stage shows and films—to the area for decades. This collection features photographs ranging from 1948-1978 from Hofstra University's *Calderone Theatre Collection*. Included are theatre interior, exterior, construction, and grand opening photographs.



[Access the Collection](#)



[Collection Finding Aid](#)



Joan and Donald E. Axinn Library, c. 1995

Hofstra Buildings Collection

Hofstra University, founded in 1935, was named after William Sake Hofstra and Kate Mason Hofstra. This collection contains various photographs ranging from 1935 to the mid-1990s from the University Archives Buildings Collection.



[Access the Collection](#)



[Online Exhibit](#)