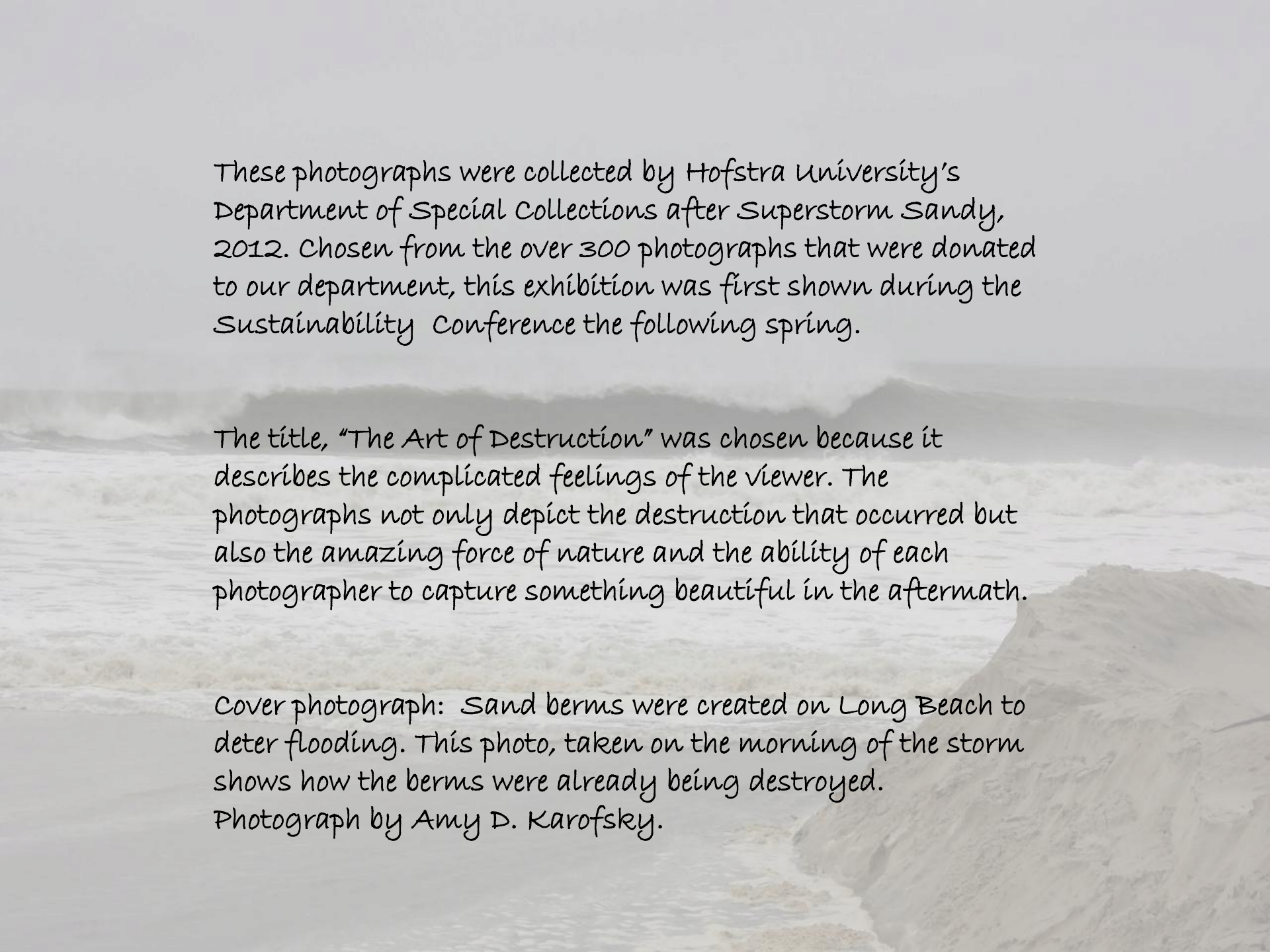




## THE ART OF DESTRUCTION:

Superstorm Sandy, 2012  
on Long Island



These photographs were collected by Hofstra University's Department of Special Collections after Superstorm Sandy, 2012. Chosen from the over 300 photographs that were donated to our department, this exhibition was first shown during the Sustainability Conference the following spring.

The title, "The Art of Destruction" was chosen because it describes the complicated feelings of the viewer. The photographs not only depict the destruction that occurred but also the amazing force of nature and the ability of each photographer to capture something beautiful in the aftermath.

Cover photograph: Sand berms were created on Long Beach to deter flooding. This photo, taken on the morning of the storm shows how the berms were already being destroyed. Photograph by Amy D. Karofsky.



## THE POWER OF WATER

Waves start to break over  
the walkways and docks.

Photograph by  
Harrison Knowles, October 29, 2012





**Flooding on California  
Avenue's west end on the  
morning of the storm,  
Long Beach**

**Photograph by Amy D. Karofsky**



**People removed belongings from  
flooded homes in any way that  
they could.**

**October 29, 2012**

Photograph by Harrison Knowles



**A tree stands alone in the middle  
of a flooded neighborhood on the  
day of the storm.**

Photograph by Harrison Knowles





**This Long Beach street scene became a typical sight after the storm. Sand poured onto roadways and into yards and basements. Water-soaked belongings were left on the curb.**

Photograph by Harrison Knowles



**Cars were pushed around  
like toys as the ocean water  
surged into the streets of  
Long Beach.**

**Motors were burned out  
and many vehicles  
caught fire.**

Photograph by Amy D. Karofsky





**The storm created rivulets  
and rivers up and down  
Jones Beach; the theater  
was flooded and parts of  
the boardwalk were ruined.**

Photograph by Tina Morris



**Docks were torn apart and boats were  
submerged all around Long Island.**

Photograph by Thomas Saltzman





**Pilings show where the dunes  
used to be on Long Beach.**

Photograph by Harrison Knowles

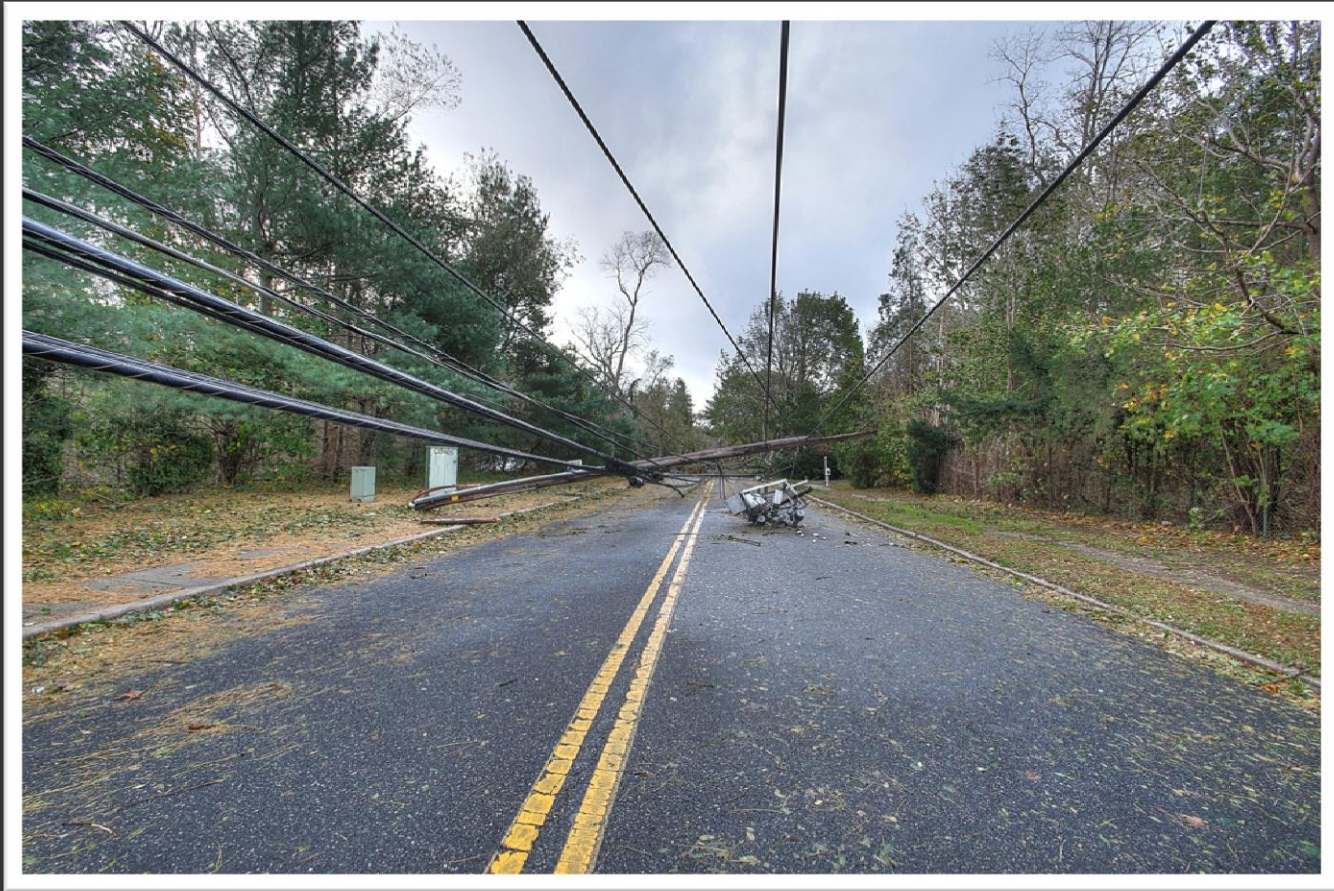




**Heavy machinery brought in to clear the sand from  
the streets of Long Beach, November 2012**

Photograph by Harrison Knowles

# STORM SURGE – WHAT HAPPENS WHEN THE LIGHTS GO OUT



**Downed power lines create an artistic vanishing point.**

Photograph by Ryan Brook





**The sun breaks through the  
clouds and downed power  
lines.**

Photograph by Ryan Brook





**Trees topple in unison,  
Allerton Drive, East Northport.**

Photograph by Emily McNamara



## Intersection of Broad and Exeter, Williston Park

Photograph by Michael O'Connor





**Downed tree in Roslyn Heights**

Photograph by Brett Bochner





**Tree trunk, October 30, 2012**

Photograph by Ryan Brook





Mist on Mill Pond  
shrouds downed trees

Photograph by Robert L. Harrison





Hundreds of thousands of people along the east coast lost power for days and weeks after the storm.

Eating by lanterns, flashlight and candles was a common scene in most households.

Photograph by Lisa Landau



**An old tree ripped through  
the upper floor of a house  
in Huntington.**

Photograph by Amy D. Karofsky



## WHAT'S LEFT BEHIND



Only the chimney and front steps  
remain of a house in Babylon.

Photograph by Robert L. Harrison



The Long Beach boardwalk looks like a roller coaster after the storm.

Photograph by Deborah Lom





A car ruined by the storm and  
inundated with sand and  
debris

Photograph by Harrison Knowles



**Sand reclaimed from streets and yards is piled high waiting to be cleaned and put back on the beach at Long Beach, November 2012.**

Photograph by Harrison Knowles





**After the storm, tree limbs  
were cut and whole trees  
were brought down and  
piled by the side of  
the path at Mill Pond.**

Photograph by Robert L. Harrison





**Old tree stumps looking like mushrooms or leaves  
lying in the undergrowth of Mill Pond**

Photograph by Robert L. Harrison





**Adding insult to injury, snow fall covers property damage and causes power outages all over again on November 7th.**

Photograph by Robert L. Harrison





**Impressions left on the sands of Jones Beach, November 2012**

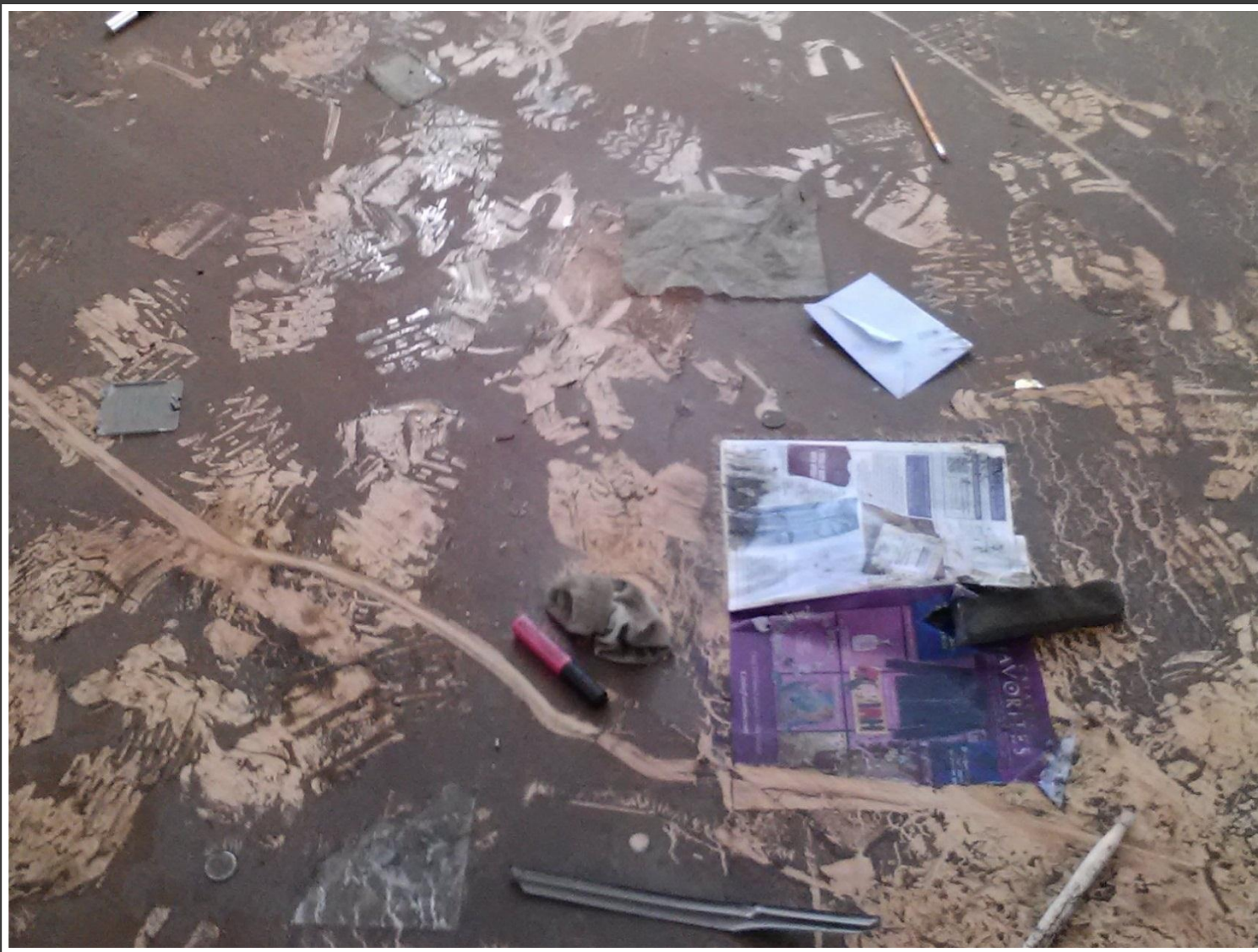
Photograph by Tina Morris





**A jewel lost three years before the storm was flushed out of its hiding place to be left amongst the debris. The homeowner lost many belongings in the flood, but was gifted with this one small item.**

Photograph by Amy Kahn



**The debris and sand paint a textured picture of  
“what’s left behind” after the water recedes.**

Photograph by Jennifer Peters.



If you would like to contribute photographs to the Superstorm Sandy Collection at Hofstra University Library's Department of Special Collections, please send your digital photographs to:  
[LISI@hofstra.edu](mailto:LISI@hofstra.edu)

Please include your name and the date the photograph was taken.