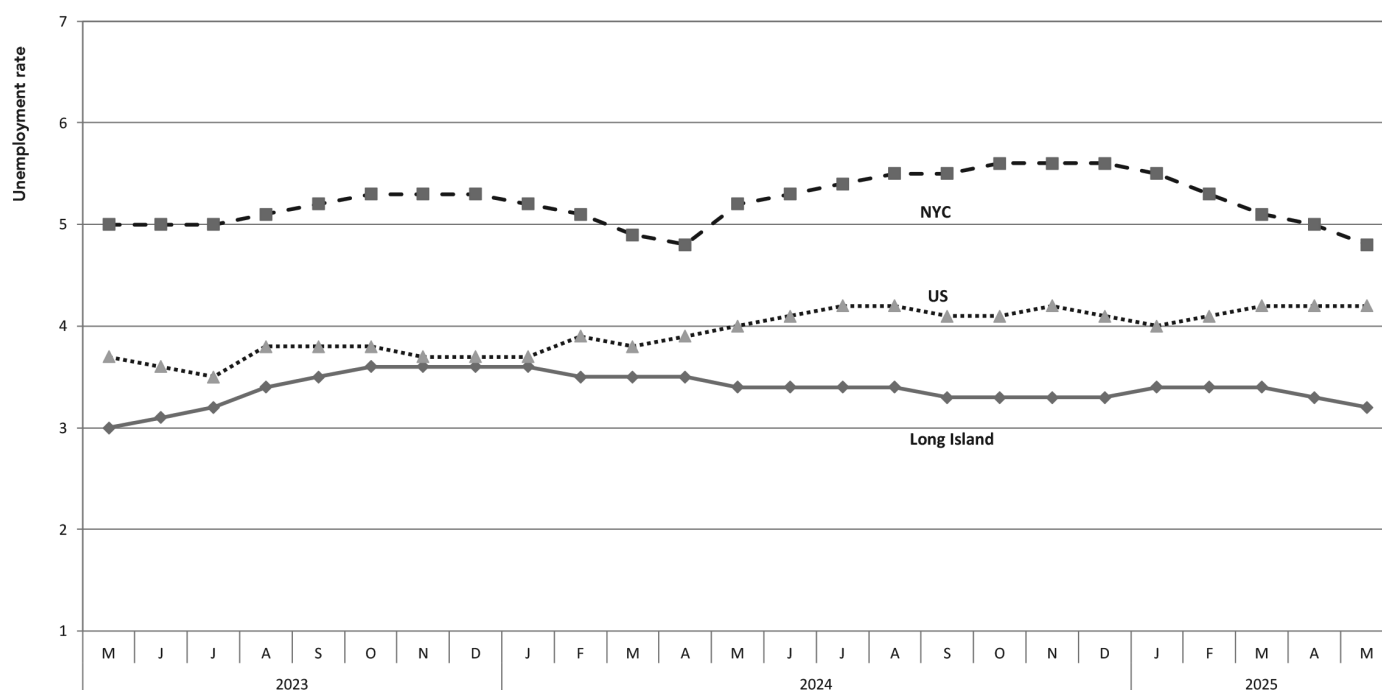


# Latest Labor Market Trends at Mid-year 2025

by Gregory DeFreitas

**Figure 1:**  
Unemployment Rates in US, NYC & Long Island, May 2023-May 2025  
(% monthly, seasonally adjusted)



**Table 1:**  
**Number of Nonfarm Jobs:**  
**New York City, Long Island**  
**& All U.S., 2024-2025**  
*(in thousands,*  
*not seasonally adjusted)*

	May 2025	May 2024	May 2024-2024	
			Net Chg	% Chg
U.S.	159,964	158,256	1,708.2	1.1%
NY State	9,999.0	9,889.0	110.0	1.1%
NYC	4,847.3	4,780.3	67.0	1.4%
Long Island	1,381.0	1,372.2	8.8	0.6%

Table 1 Source: Establishment survey data from US Department of Labor.  
Note that data reflect regular revisions by Dept. of Labor.

**Table 2**  
**Civilian Labor Force, Employment & Unemployment, 2024-25**  
*(in thousands, not seasonally adjusted)*

<u>AREA</u>	Labor Force		Employed		Unemployed		Unemp. Rate	
	May 2025	May 2024	May 2025	May 2024	May 2025	May 2024	May 2025	May 2024
U.S.	170,216	167,576	163,401	161,341	6,815	6,235	4.0%	3.7%
NYS	9,818	9,798	9,474	9,408	343.7	390.3	3.5	4.0
NYC	4,266	4,262	4,081.7	4,053.1	184.5	209.3	4.3	4.9
LONG ISLAND	1,498	1,492	1,457	1,445	40.9	46.9	2.7	3.0
Nassau Co.	705	702	686	680	18.9	21.7	2.7	3.1
Suffolk Co.	794	791	772	765	22.0	25.2	2.8	3.2

Table 2 Source: CPS household survey data from NYS Dept. of Labor. Data reflect their regular revisions .